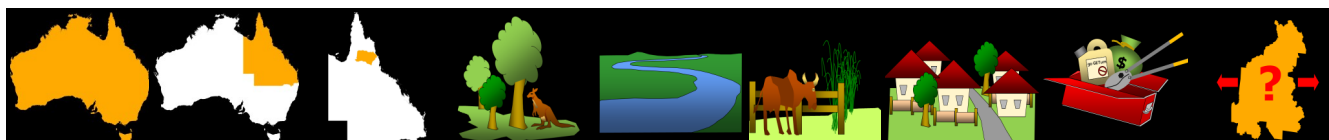


Water Lettuce *Pistia stratiotes*

National priority State priority Previous local Conservation Water resources Agriculture and industry Community and residential Feasibility of control Current extent



0.0/5 1.5/5 3.0/05 5.0/5 5.0/5 3.0/5 3.0/5 3.0/5 3.0/5

Priority

Details

Description A free-floating aquatic weed with small, green flowers that resembles an open head of lettuce. Leaves are spongy, light green and water repellent. Water Lettuce reproduces from seeds or division.

Distribution Water Lettuce was discovered in Tinaroo Dam in 2018 and it is presumably also in the Upper Barron catchment.

Impacts Water Lettuce floats on still or slow-moving water and can rapidly grow to cover the entire water surface with a thick mat of vegetation. This shades out submerged plant life, impedes oxygen exchange, impacts fish and other aquatic organisms and provides breeding opportunities for mosquitoes.

Key projects Joint control operations at Tinaroo Dam began with Sunwater and Tablelands Regional Council in 2018. Systematic top down management upstream of Tinaroo Dam will be required to reduce the impacts.

Background

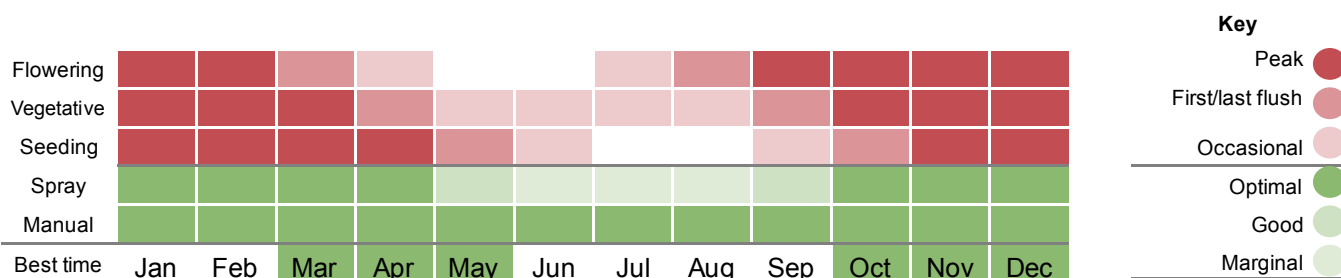
Water Lettuce is a free-floating aquatic weed found in tropical countries although its country of origin is not known. Water Lettuce was introduced to Australia as an aquarium and water-garden plant and rapidly forms dense infestations that cover the surface of entire rivers, dams and irrigation channels. This affects water flow, damages native ecosystems and impedes recreational use of water bodies.

Ensure sources of water plants like water lily are weed free and do not empty aquariums into waterways or impoundments.

Water Lettuce reproduces by seed and by division from runners and a top of catchment down approach is needed to systematically remove it from Tinaroo Dam and other waterways.

Water Lettuce is spread by flood water so control operations will focus on areas at risk following major weather events.

Control calendar



For more information on using this biosecurity action plan fact sheet, and further information on control tools, refer to the Tablelands Biosecurity Plan available at trc.qld.gov.au and customer service centres.



1300 362 242 (24hr Customer Service)



info@trc.qld.gov.au



www.trc.qld.gov.au

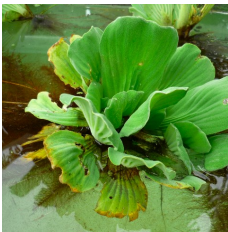
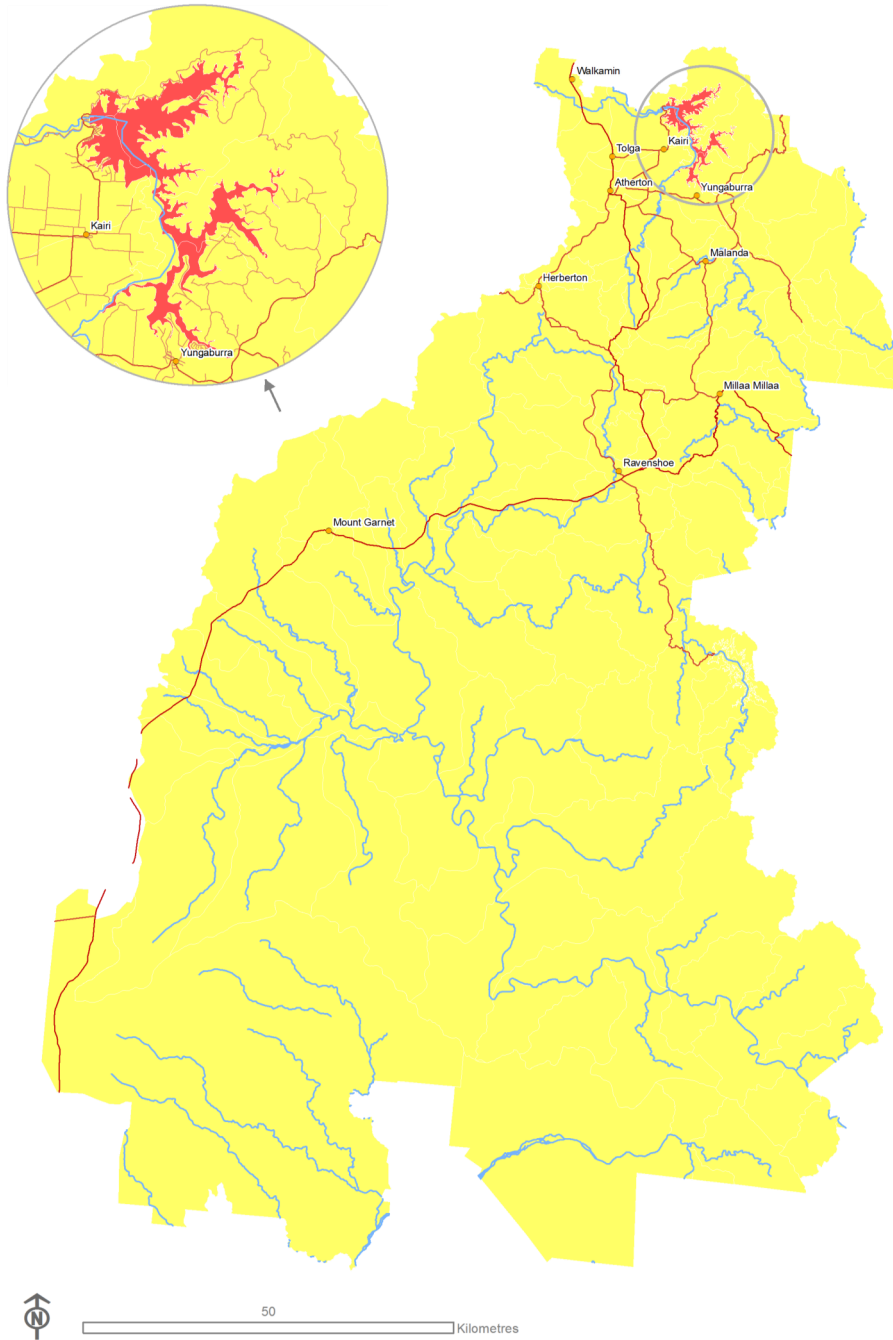


PO Box 573, Atherton QLD 4883



Tablelands Regional Council

Customer Service Centres in Atherton, Herberton, Malanda & Ravenshoe



In the delimitation zone

In the prevention zone

In the asset protection zone

What is my biosecurity obligation?

A high priority is to identify how far upstream this infestation occurs and to prevent it entering the Walsh River catchment, west of the Great Dividing Range. Report any suspected outbreaks/detections to Tablelands Regional Council (TRC) on 1300 362 242.

Water Lettuce is a restricted invasive plant. It is an offence under the *Biosecurity Act 2014* to move, share, give away and sell this plant. Ensure aquatic plants for aquariums and water features are sourced from a reliable supplier and are weed free. Make sure watercraft, trailers, machinery and vehicles moving from the infested areas are free from plant material and soil.

Control plants at priority environmental and visitor assets. Assist the survey and control team and management programs by maintaining property access and tracks, and by not moving plant material from the infestation area.

Floating

Aquatic

Perennial

Biosecurity Act Restricted matter category

2
Must be reported

3
Do not distribute

4
Do not move

5
Do not keep

6
Do not feed

Control



Spread

