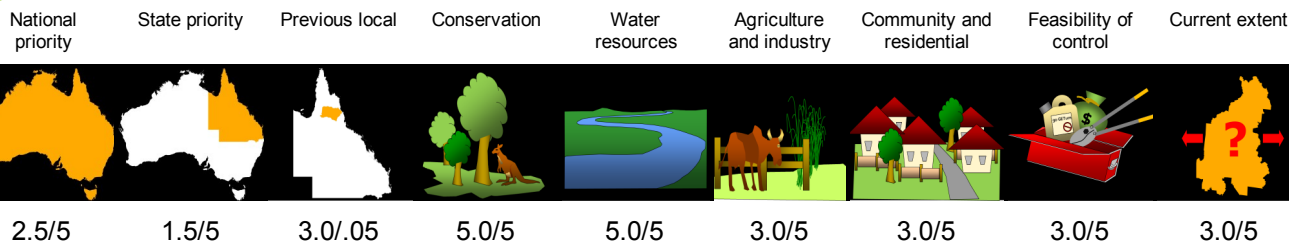


Water Hyacinth *Eichhornia crassipes*

Priority



Details

Description A free floating aquatic herb with glossy, spoon-shaped leaves and distinctive purple/lilac flowers. Water Hyacinth forms dense blankets over waterways and wetlands. It is distinguished from native hyacinth which has white flowers and pointed, spear-shaped leaves (see photos below).

Distribution Currently only known in Tinaroo Dam but presumed to be established upstream.

Impacts Water Hyacinth floats on still or slow-moving water and can grow rapidly to cover the entire surface of a water body. The thick mat of vegetation shades out submerged plant life and reduces oxygen exchange, making the water unsuitable for fish and other animals.

Key projects An eradication program is being carried out by SunWater and Tablelands Regional Council at Tinaroo Dam.

Background

Water Hyacinth is a weed of national significance that is often introduced into the environment from water features, ponds and aquariums. It grows from seed and by division of mature plants and may also be spread in contaminated soil from water features.

Water Hyacinth was detected in Lake Tinaroo in 2018. It is possible there is an upstream source but it has not been located. A wider search is being conducted to systematically identify the source population/s or any isolated outbreaks.

Keeping an eye out for unusual or new aquatic plants on your property may assist in locating other infestations and protecting priority environmental and visitor assets.

Joint management activities and community education efforts at Tinaroo Dam with SunWater and the Department of Environment and Science are in place.

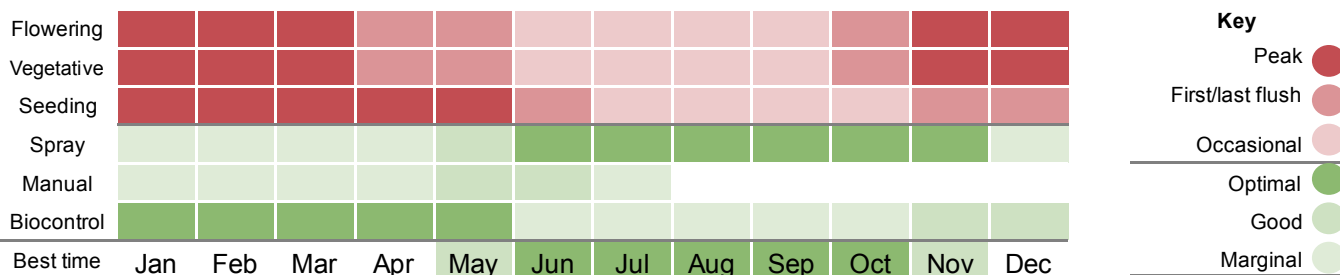


Native Blue Hyacinth.



Pest plant Water Hyacinth.

Control calendar



For more information on using this biosecurity action plan fact sheet, and further information on control tools, refer to the Tablelands Biosecurity Plan available at trc.qld.gov.au and customer service centres.



1300 362 242 (24hr Customer Service)



info@trc.qld.gov.au



www.trc.qld.gov.au

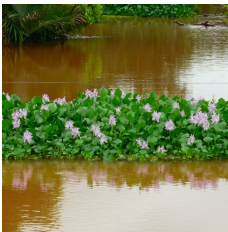
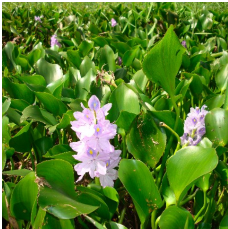
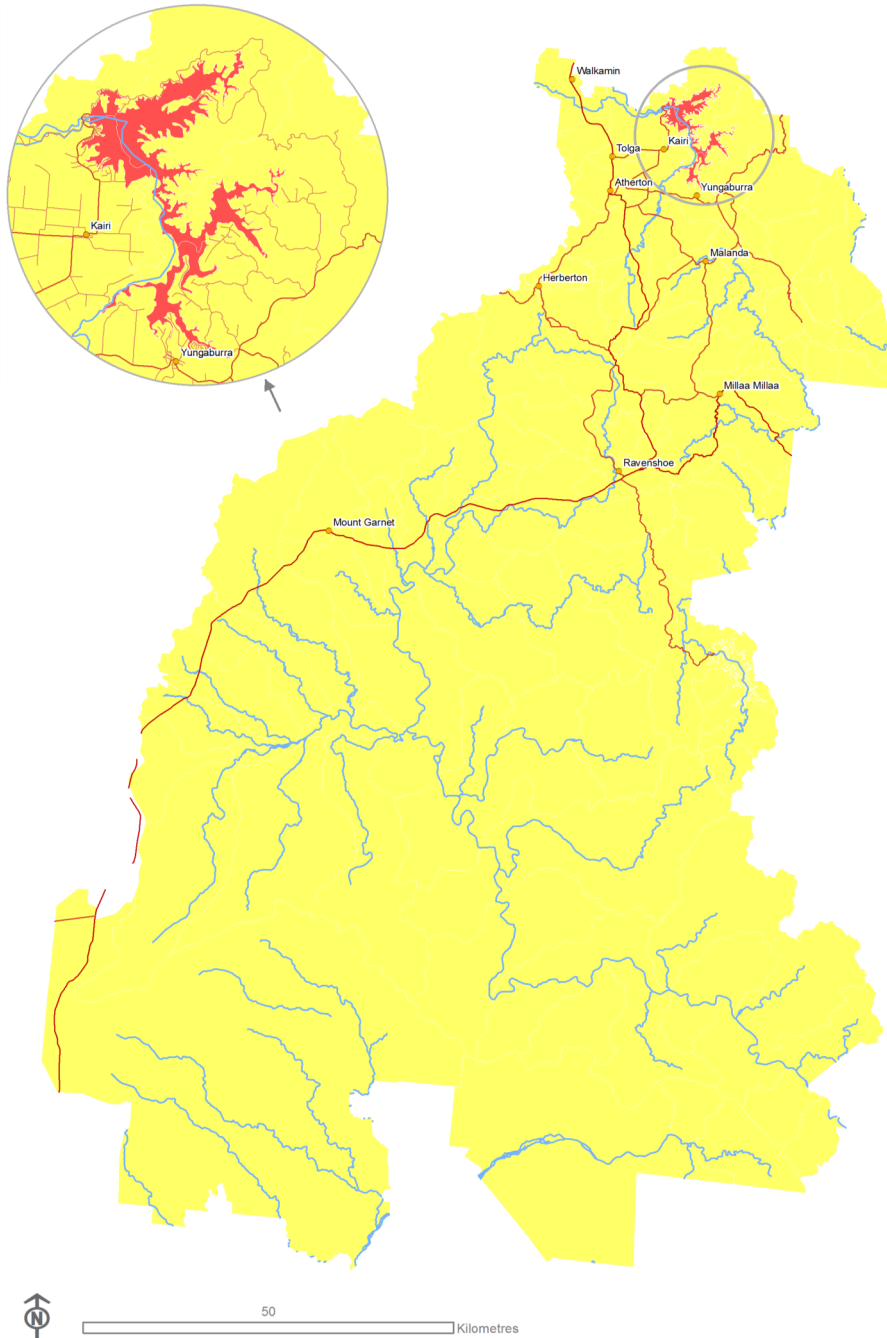


PO Box 573, Atherton QLD 4883



Tablelands Regional Council

Customer Service Centres in Atherton, Herberton, Malanda & Ravenshoe



- Floating
- Aquatic
- Perennial

Biosecurity Act Restricted matter category

- 2 Must be reported
- 3 Do not distribute
- 4 Do not move
- 5 Do not keep
- 6 Do not feed

Control



Spread



What is my biosecurity obligation?

In the prevention zone

Report any suspected outbreaks or detections to Tablelands Regional Council (TRC) on 1300 362 242. It is an offence under the *Biosecurity Act 2014* to move, share, give away or sell this plant. Ensure wetland and pond plants are sourced from a reliable supplier and are from a weed free area. Do not dump aquarium plants or fish into waterways.

In the asset protection zone

Water Hyacinth is a restricted invasive plant. It is an offence under the *Biosecurity Act 2014* to move, share, give away or sell this plant. Report any suspected outbreaks or detections to TRC on 1300 362 242.

Ensure boats, trailers, machinery and vehicles moving from infested areas are free from plant material and soil. Source wetland and pond plants from a reliable supplier and from a weed free area.

A combination of mechanical, biological and herbicide methods are the best strategy in managing Water Hyacinth. Programs to remove Water Hyacinth from Tinaroo Dam are being conducted and surveillance is being undertaken in upstream areas.