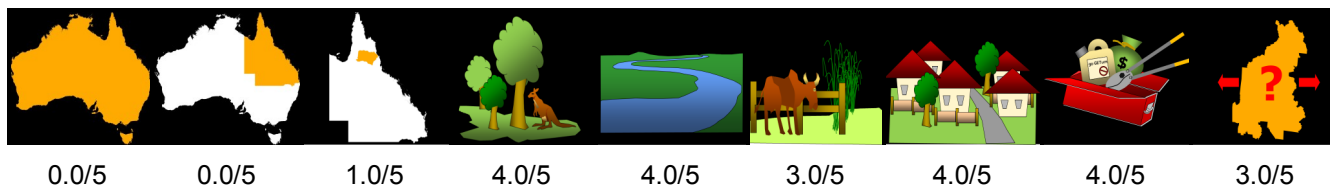


Turbina Vine *Turbina corymbosa*

National priority State priority Previous local Conservation Water resources Agriculture and industry Community and residential Feasibility of control Current extent

Priority



Details

Description Turbina Vine can form vine towers (20m+) over native vegetation with thick (30cm), rope-like stems. Stems of new growth are smooth, green, cylindrical and hairless while older stems are thicker, pale grey and roughly cylindrical. Leaves are oval and heart-shaped at the base with a pointed tip, 3–10cm long. Turbina Vine has sprays of fragrant, white, bell-shaped flowers. The fruit is a papery beaked capsule 80mm–1cm long and full of brown, hairy seeds.

Distribution Turbina Vine is found along the entire length of the Barron River below Tinaroo Dam. On the Atherton Tablelands it is concentrated around rainforest margins in the north of the region.

Impacts Invasion of rainforest areas, displacing native vines and shrubs. Dried fruits and seeds float readily in water and have a high level of dormancy.

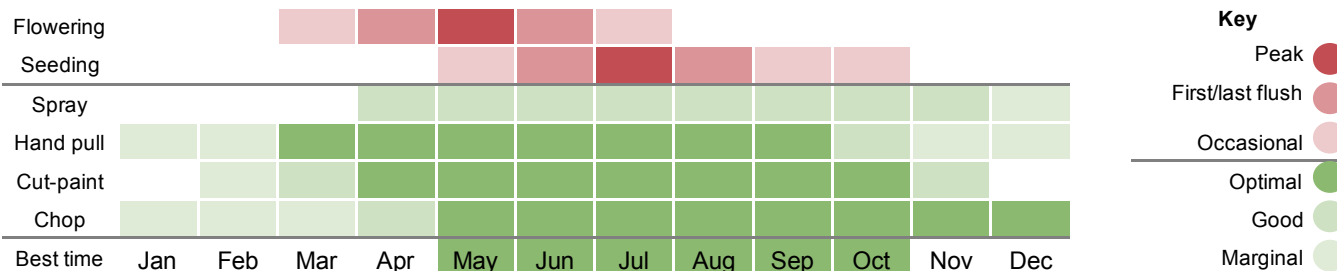
Key projects Control program's have centred on Mabi forest (Type 5b and critically endangered under the *Environment Protection and Biodiversity Conservation Act 1999*) and rainforest margins at Barney Springs, largely through support from external funding.

Background

Turbina Vine is scrambling vine that can totally blanket vegetation. Originally from tropical America and now naturalized in North East Queensland. It can grow from near sea level to 750 m in rain forest regrowth and in lowland and upland rain forest.

The effects of Cyclones Larry and Yasi contributed to the proliferation of Turbina Vine in rainforest margins and on riverbanks on the Atherton Tablelands.

Control calendar



For more information on using this biosecurity action plan fact sheet, and further information on control tools, refer to the [Tablelands Biosecurity Plan](#) available at trc.qld.gov.au and customer service centres.



1300 362 242 (24hr Customer Service)



info@trc.qld.gov.au



www.trc.qld.gov.au

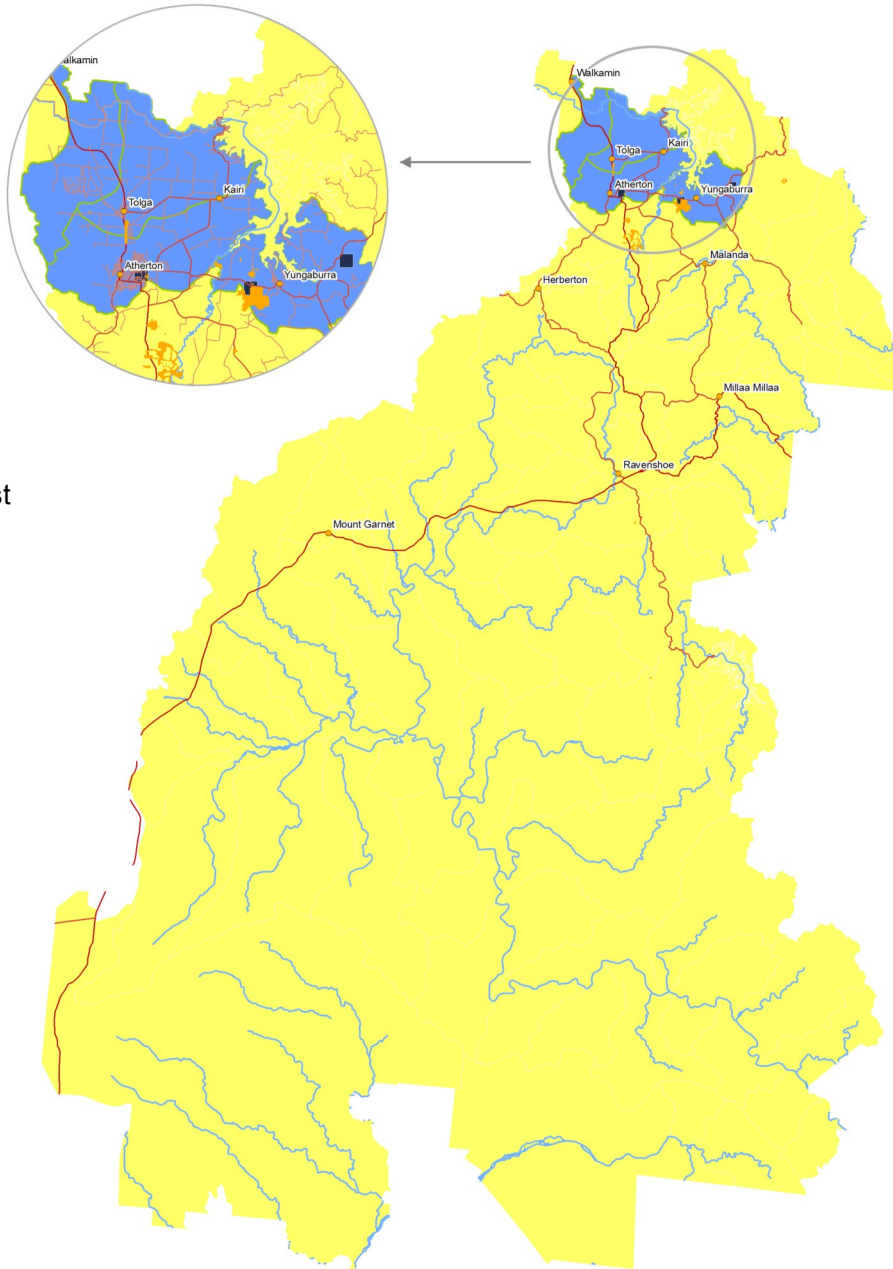


PO Box 573, Atherton QLD 4883



Tablelands Regional Council

Customer Service Centres in Atherton, Herberton, Malanda & Ravenshoe



Mabi forest



What is my biosecurity obligation?

In the prevention zone

Turbina Vine is not a prohibited or restricted invasive plant however everyone has a general biosecurity obligation to take reasonable and practical steps to minimise the risks associated with its control.

In the intensive control zone

Priority is given to managing Mabi forest, high value riverine habitat and roadside infestations to reduce further spread.

Vine

Terrestrial

Perennial

Local laws apply

Must not breed

Must not propagate

Must not introduce

Must not sell or supply

Must not provide harbour

Control



Spread

