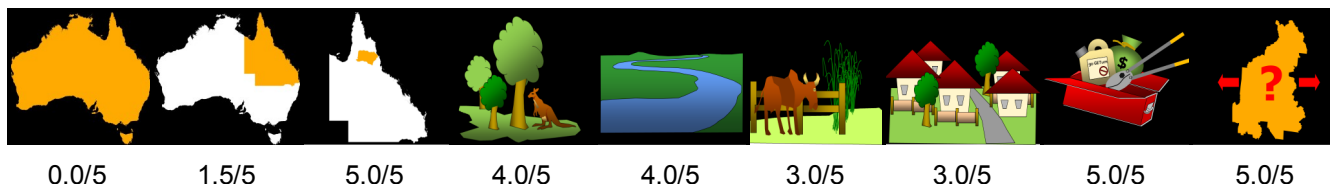


# Thunbergia *Thunbergia grandiflora*

National priority    State priority    Previous local    Conservation    Water resources    Agriculture and industry    Community and residential    Feasibility of control    Current extent

Priority



Details

**Description** A rapidly growing vine that forms significant underground tubers and climbs and smothers vegetation. The lavender-blue, purple or mauve trumpet-shaped flowers are identical but the leaves may vary from choko-like to oval in shape, with a narrow pointed tip.

**Distribution** Several isolated outbreaks near Malanda, Wondecla, Gentle Annie and the Old Cairns Track.

**Impacts** This plant climbs and smothers vegetation, killing and often pulling down mature trees with its weight. It does significant damage in riparian areas and forest edges where it can outcompete most plants.

**Key projects** All known locations of *Thunbergia* on the Tablelands region are subject to control efforts.

Background

The separate species of *T. laurifolia* and *T. grandiflora* have been merged into a single species.

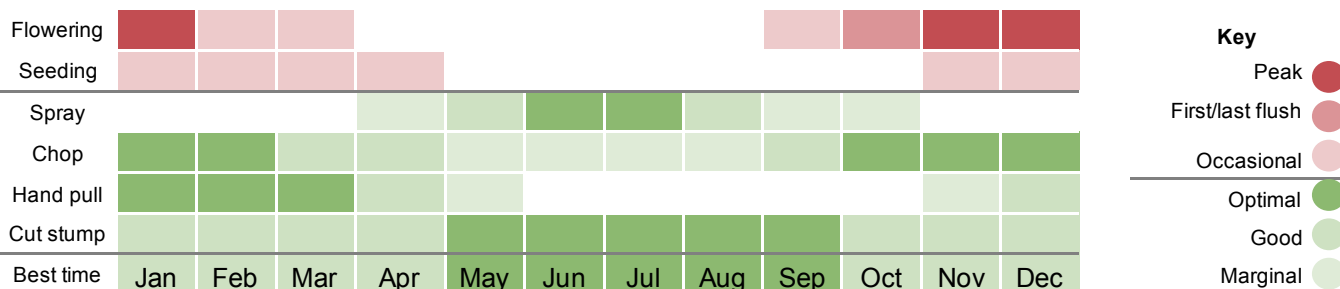
*Thunbergia* vine is mainly spread through the sharing of plants between gardeners. It may also be spread during floods, cyclones, or during clean-up work after these events.

Ensure best practice weed hygiene measures are in place to reduce the risk of spread to new locations. Make sure vehicles and machinery are clean before arriving and commencing work.

If you have an active infestation on your property you can assist the survey and control team by maintaining property access points and tracks, and not moving soil and plant material from the infestation area.

Targeted treatment of upstream properties is the most effective way to manage *Thunbergia* on a catchment scale. Repeat treatments are required to ensure underground tubers do not re-establish.

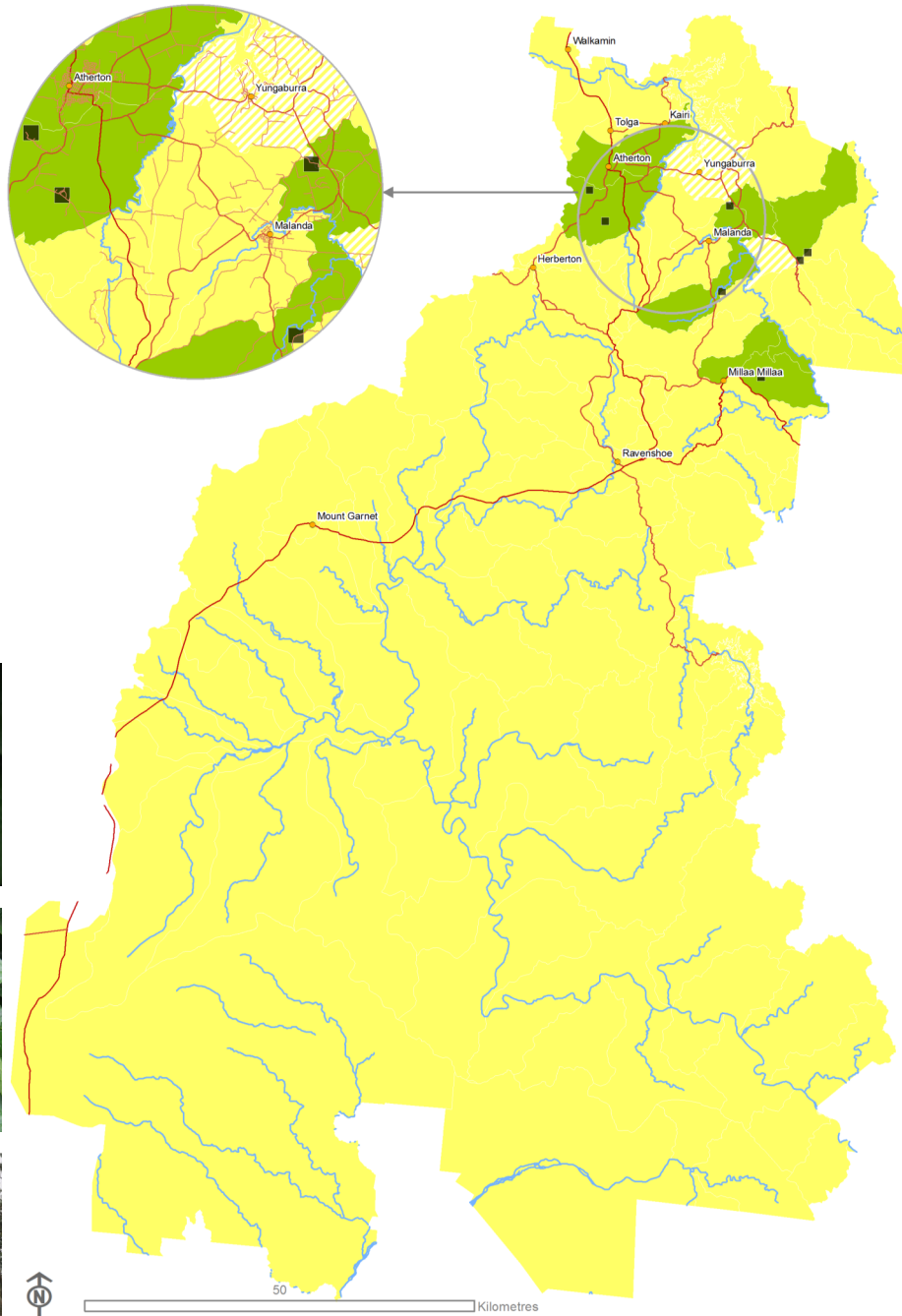
Control calendar



For more information on using this biosecurity action plan fact sheet, and further information on control tools, refer to the [Tablelands Biosecurity Plan](#) available at [trc.qld.gov.au](http://trc.qld.gov.au) and customer service centres.

1300 362 242 (24hr Customer Service)   
 [info@trc.qld.gov.au](mailto:info@trc.qld.gov.au)   
 [www.trc.qld.gov.au](http://www.trc.qld.gov.au)  
 PO Box 573, Atherton QLD 4883   
 Tablelands Regional Council

Customer Service Centres in Atherton, Herberton, Malanda & Ravenshoe



**In the delimitation zone**

**In the prevention zone**

**In the eradication zone**

### What is my biosecurity obligation?

A wider search in catchments above Tinaroo Dam is required to identify source populations and isolated outbreaks. Report any detections for suspected vines with lavender-blue, purple or mauve flowers or Tablelands Regional Council on 1300 362 242.

Thunbergia is a restricted invasive plants. It is an offence under the *Biosecurity Act 2014* to move, share, give away or sell this plant. Report any suspected outbreaks or detections to Tablelands Regional Council on 1300 362 242.

Seek advice prior to working in the vicinity of known infestations. If you have an active infestation on your property you can assist the survey and control team by maintaining property access points and tracks, and not moving soil and plant material from the infestation area.

If Thunbergia is present on your property, make sure your green waste does not contain live plant material and is not disposed of in areas where the plant is likely to establish. Report any suspected outbreaks or detections to Tablelands Regional Council on 1300 362 242.

Vine

Terrestrial

Perennial

Biosecurity Act Restricted matter category

**2**  
Must be reported

**3**  
Do not distribute

**4**  
Do not move

**5**  
Do not keep

**6**  
Do not feed

Control



Spread

