

TABLELANDS

2030+

Community Plan



Darren Jew © Tourism & Events Queensland



© Damien Breach Photography



© Shaw Shang



Karl Seelig © Tourism & Events Queensland



Acknowledgement of Country

We acknowledge the Native Title parties across the Tablelands Regional Council area and other family groups who are the traditional custodians of this land. We recognise your continuing connection to Country and pay respect to Aboriginal and Torres Strait Islander Elders past, present and emerging including:

- Bar Barrum of the area around the Walsh River and to the west of the Wild River
- Dulabed and Malanbarra Yidinji of the Gillies Range area
- Girramay of the Kirrama area
- Gugu Badhun of the Wairuna/Lamonds Lagoon area
- Jirrbal of the Koombooloomba, Ravenshoe and Herberton areas
- Mamu of the Millaa Millaa area
- Ngadjon-jii of the Malanda and Topaz areas
- Tableland Yidinji of the Kairi, Tolga, Tinaroo and Lake Barrine areas
- Warrungu of the Gunnawarra/Goshen area.

VISION STATEMENT

We celebrate

We are sustainable

We are inclusive

We are resilient

We will **celebrate** and embrace our uniqueness, community connections, First Nations Peoples, diversity and enviable healthy lifestyle.

We will continue to focus on **sustainable** provision of assets, business development and regional planning while protecting our natural environment and good quality agricultural land.

We will be **inclusive**, respecting diversity and providing equitable access to all.

We will be **resilient** and adaptable, responding to change and opportunities.

OUR TABLELANDS COMMUNITY



We are a growing community of



26,244

- 49 median age
- 7.9% First Nations Peoples
- 13.2% born overseas
- 29.3% live alone
- 31.6% couples with children

we LIVE




WORK



& PLAY

across 11,419km²

- 200+ sporting and recreation clubs, groups and organisations
- 19.6% of us volunteer
- 2775 local businesses
- \$1167 median weekly household income

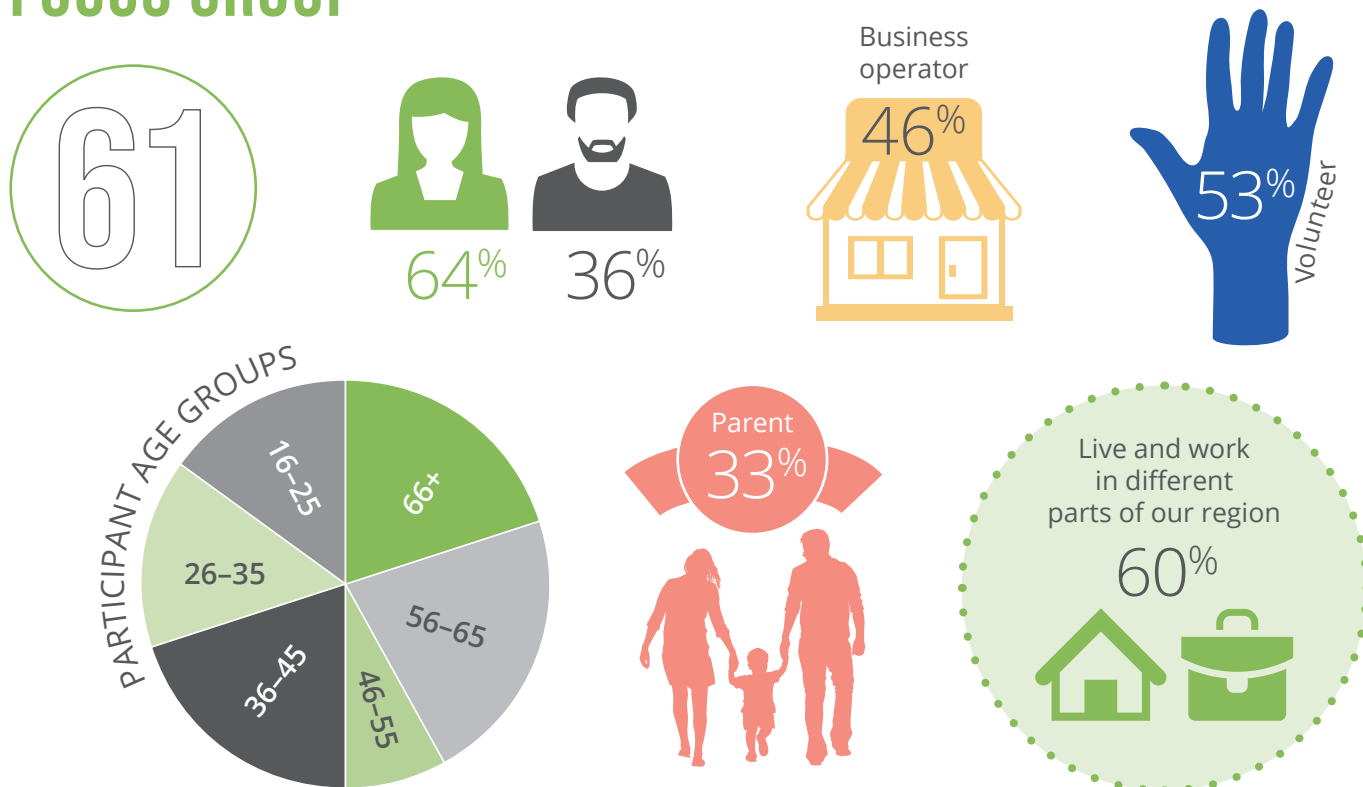
FORMATION OF THE COMMUNITY PLAN

A representative group of 61 residents met twice in November 2021 to undertake a deep dive into our ambition for the Tablelands Region beyond the current decade (Tablelands 2030+). The focused and deliberate insights informed the broader community engagement that occurred between December 2021 and April 2022. In late May focus group members refined the feedback to create this roadmap of priorities and aspirations for our future.

Other community consultation throughout 2021 and 2022 also informed the development of this plan including age-friendly, climate risk management, inclusive communities, proposed Planning Scheme amendments, and insights from Tablelands Regional Council's advisory committees.



FOCUS GROUP



Collectively we have lived here for 1000+ years

COMMUNITY ENGAGEMENT



574 ideas generated on education and training, employment, transport, housing, healthcare, safety, dining and shopping, open space and natural environment, environmental sustainability, spirituality, infrastructure, public amenities and services, industry, recognition of First Nations Peoples, sports and recreation, tourism, arts and culture, connectivity, and access to services and opportunity.

Online

- 163 quick poll responses
- 41 responses to draft plan
- 30 posts across all TRC social media channels between September 2021 and April 2022 with 380 engagements

TRC staff and Councillors talked to hundreds of people at seven community events across the region.

TRC should be commended on the approach taken to developing the Tablelands 2030+ Plan via a genuine partnership with community. The process reflected the diverse demographics, interests, lived experience and aspirations of our community. This has created a high degree of community confidence in Council, improved understanding of the role of Council, and importantly, shared ownership of the plan — which should translate into meaningful ongoing engagement in the plan's implementation through a collaborative approach with Council and other partners.

Miya Isherwood

I've been grateful for the opportunity to work closely with Tablelands Regional Council and other community members to begin the process of the Tablelands 2030+ Community Plan.

Catherine English



© Tamara Vallance

WHY WE LIVE HERE



© Tamara Vallance

What we value and why we live here hasn't changed much over the last decade.

| Tablelands Community Plan 2012 | Survey 2019 | Quick Poll 2021 |
|---|--|--|
| tropical highland climate rural, relaxed lifestyle rural, farm landscape natural environment farming economy and way of life small country town atmosphere sense of community good place to raise children | climate open space, smaller population, not built up relaxed lifestyle natural environment country lifestyle yet close to the city quality of life like/know the area rural, farm landscape | natural environment climate open space relaxed lifestyle quality of life safe and secure country lifestyle good place to raise children sense of community |



© Shaw Shang

When unpacked further, the focus group and residents indicated that we also value:

- recognition of First Nations Peoples — cultural history, celebrations, language, signs, education and awareness
- cultural events, festivals, live music, music and art opportunities
- connected communities
- opportunities to collaborate and consult on important decisions
- building community resilience, community place making, art, sculpture, libraries, community hubs, volunteer/not-for-profit hub and sharing resources
- inclusion and access for all
- sustainable liveability, carbon neutral and reducing our environmental/carbon footprint
- shop local, stay local, eat local, and local services
- care for environment, natural environmental values, enjoying the landscape to come together, reduce, reuse, and recycle
- environmental sustainability — innovative and community centred
- tourism, biking, waterfalls, food tourism, farm stay, eco-tourism, adventure tourism and promotion of attractions
- cycling tracks connected across the region
- opportunities for youth, youth precincts including skate park and inflatable water park
- education — local, TAFE and university hub, trade positions, better facilities and alternative education pathways
- activate our senior knowledge base / tech training
- sustainable transport, electric car charging and public transport
- socially equitable housing, diversity of housing, affordable housing, sustainable housing, multiple occupancy, and aged care (independence)
- better and smart street lighting for safety
- maintaining unique town attributes
- food security
- water security, conservation and infrastructure
- diverse agriculture, sustainable, high value farming areas protected
- innovation
- industry and employment diversification, good permanent jobs, and more jobs for young people
- sustainable businesses
- intelligent town planning, support household sustainability e.g. encourage rain water tanks, solar, etc.
- clean energy, jobs for locals and self-reliant energy production
- caring for community — mental health, allied health, bulk billing, home visits, disability access, visiting specialists, specialist hub, and health and wellbeing
- services to keep families here
- nice places to hang out
- long-term view for decision making
- maintaining and enhancing what we value is important in all decisions about our region.



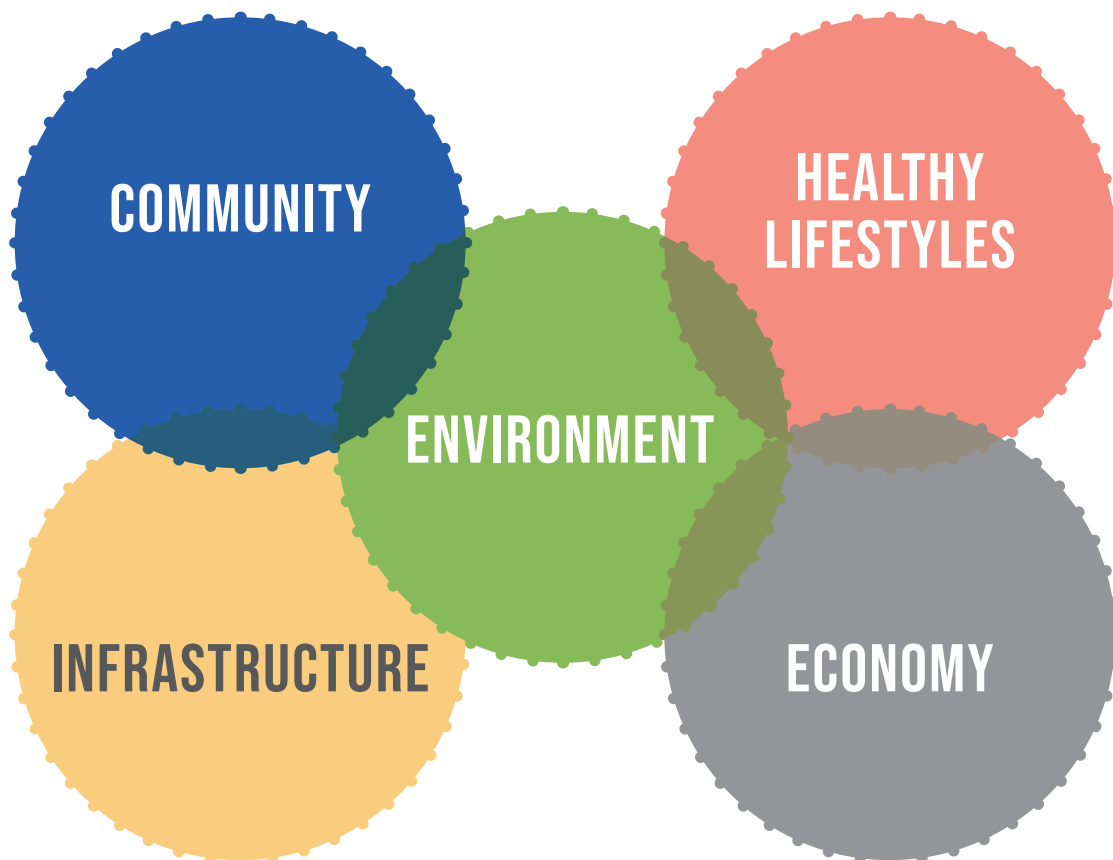
CURRENT CHALLENGES

As we plan for our bright future we are happy to leave behind:

- lack of digital connectivity
- red tape
- thinking in silos
- limiting beliefs
- parochial town views
- water insecurity
- unsustainable development
- crime.

KEY AIMS & PRIORITY AREAS

The responsibility for achieving the desired outcomes are, in some instances, clearly the responsibility of local government (Tablelands Regional Council). Others will require collaboration and partnerships to realise, and some will be achieved through advocacy to state and federal governments and their agencies.



ENVIRONMENT

| Climate Resilience Community and decision makers are informed and empowered to take action and mitigate climate change impacts. | Sustainable Housing & Development Sustainable and appropriate housing design and development is incentivised and encouraged. | Waste Management Waste management supports reducing, reusing and recycling. | Sustainable Agriculture Self-sustaining and regenerative agriculture. | Landscape Regeneration Maintaining biodiversity in response to development and climate change. | Education & Employment Fostering local livelihoods and innovation in emerging environmental restoration industries. |
|---|--|--|---|--|---|
| Desired outcomes | | | | | |
| <p>Lower impact on health services by minimising the number of climate-related illnesses. PA</p> <p>Leading local government area within Far North Queensland and the Queensland Climate Resilient Councils. C</p> <p>Community is prepared for the potential increase in natural disasters. CPA</p> <p>Climate impacts are accounted for when planning essential services and infrastructure. CP</p> | <p>New builds and renovations use appropriate and modern designs and materials to suit our current and future environment. PA</p> <p>Increase in solar and green technologies. PA</p> <p>Onsite water collection for domestic and industrial uses that doesn't require treated water. P</p> <p>Planning scheme amendments, incentives and rates reduction measures are introduced to encourage more sustainable land use practices, restoration efforts and sustainable buildings. C</p> | <p>Local recycling collections and reusing/repurposing encouraged. C</p> <p>Green waste household collection. C</p> <p>Reduced waste created by agriculture and industry. PA</p> <p>Education, infrastructure and incentives to support a circular economy to minimise material use across the infrastructure value chain. P</p> | <p>Incentives for farmers to replant, reforest, and create carbon sinks. PA</p> <p>Local carbon offset scheme. CP</p> <p>Enhanced soil health and biodiversity. PA</p> <p>Improved productivity and crop diversity including native agriculture. PA</p> <p>Opportunities for landholders to engage in emerging carbon markets. P</p> | <p>Increase in areas of land under native vegetation through landholder participation in voluntary schemes. CP</p> <p>Improved management of pests and weeds. CP</p> <p>Protection of waterways and freshwater habitats through riparian revegetation efforts and smarter water use. CPA</p> <p>Strengthen existing partnerships with community land care and water catchment groups. CP</p> <p>Protections of threatened and endemic species and ecosystems, such as through education, strategic planting of wildlife corridors, and innovative infrastructure. CPA</p> | <p>Leverage regional advantages and establish training programs that reflect local and regional needs. PA</p> <p>Environmental education centre of excellence. CPA</p> <p>Environmental management jobs, incorporating First Nations Peoples' knowledge and connection to country. CPA</p> |

Legend



Council



Partnership



Advocacy

HEALTHY LIFESTYLES

| Connecting People | Food Security | Supporting Community | Accessible Services | Health Outcomes | Water Recreation |
|--|--|---|---|--|---|
| <p>Meaningful, accessible and inclusive community connections.</p> | <p>Community-supported agriculture helps people participate in healthy diet and living.</p> | <p>Well supported volunteers and community groups.</p> | <p>Better access to health and wellbeing services.</p> | <p>Improved quality of life.</p> | <p>Better use of public water spaces.</p> |
| Desired outcomes | | | | | |
| <p>Modern opportunities for youth. C P A</p> <p>Central and visual gathering spaces. C P</p> <p>Mentoring programs to connect seniors and younger community members. C P A</p> <p>Platforms and programs that support community interaction. C P A</p> | <p>Communal gardens. P</p> <p>Crop diversity. P A</p> <p>Support community co-ops, markets and farm gate sales. C P</p> | <p>Increase in organisations auspicing activities. P A</p> <p>Networking and mentoring encouraged across businesses and community groups. C P A</p> <p>Incentivise volunteerism. C P A</p> <p>Shared resources to create efficiencies. P A</p> <p>Awareness of climate change on physical and mental health leading to a reduced risk. C P A</p> | <p>Improved telehealth and in-region services. P A</p> <p>Barriers to services are removed including accessibility, cost and waiting periods. P A</p> <p>More jobs in medical and allied health. A</p> | <p>GP services available for all residents. P A</p> <p>Mental health services. P A</p> <p>Timely access to services. P A</p> <p>Promotion of and supporting the region as an attractive place for private and public health professionals. C P A</p> <p>Promotion of and support for programs that improve health outcomes and reduce risk. C P A</p> | <p>Regional leader in facilities for sailing, waterskiing, rowing, canoeing, etc. C P</p> <p>Water park. P</p> <p>Alternate recreation like surf lifesaving. P A</p> <p>Commercial enterprises supporting boat, board and ski hire. P A</p> <p>Leverage fishing and fishery opportunities. P A</p> |

Legend



Council



Partnership



Advocacy

COMMUNITY

| Gathering Places Community hubs cater for youth, families and seniors. | Getting Places Support walkability, connectivity and less reliance on vehicles. | First Tablelanders Acknowledgment and prioritisation of First Nations Peoples. | Opportunity Opportunities, employment and attractions for marginalised community members. | For Everyone Physical and social access provides inclusion for all. | Culturally Minded Celebrate and foster all forms of art, history and ethnicity. |
|--|---|--|--|---|--|
| Desired outcomes | | | | | |
| Increased use and promotion of school and open spaces. C P A Multi-purpose facilities that are adaptable to changing needs. C P | Physical and social access across community promotes inclusion. C P More paths within and between towns. C A | Improved connection to Country and cultural heritage. P More education and awareness of First Nations Peoples' history. C P A Interpretive information at all information centres. C P Embed Uluru Statement from the Heart. C P A Indigenous signs and language across the region. C P | Improved outcomes for youth, First Nations People, disabled and disadvantaged residents. C P A Retention and attraction of young people and families to the region. C P | Barriers to access are removed. C P More partnerships with organisations to run inclusive events and programs. C P | Live performances, lectures and events celebrating our uniqueness. C P Promotion of public art in the form of sculpture, mural etc. C P |

Legend | **C** Council | **P** Partnership | **A** Advocacy

INFRASTRUCTURE

| Future Living Town planning for connected, integrated, sustainable and prosperous community life. | Smart Facilities Fit-for-purpose and accessible community facilities. | Serving Community Smart, sustainable, affordable and resilient infrastructure. | Farming Integrity Protection of good quality agricultural land and water security. | Moving Better Connectivity through shared ride/drive, public transport and cycling infrastructure. | Accessible Homes Equitable housing for all to live and age in place. |
|---|---|---|---|--|---|
| Desired outcomes | | | | | |
| Balance of green space and built environments. C P A Variety of housing density options. C P A Greater emphasis on shaded public spaces (more efficient energy use). C Reduction in time taken to apply/ approve infrastructure development. C A | Better maintenance of facilities. C P A Precincts that promote people gathering (potential integration of information centres into hubs that service visitors and locals). C P Mitigate rising costs like insurance. A | Efficient and adequate essential services. C P A Environmentally aligned and attractive public infrastructure. C P A | Food and water security. C P A Balancing development with the preservation of agriculture. C A Diversification to take advantage of the uniqueness of our landscape. P A Development of agri-tourism. P A Reduction in food kilometres. P A Supporting landholders to move into secondary industry infrastructure in farming and industrial areas. C P A | Extend and maintain on- and off-road bike network. C P A Walking and cycling infrastructure integrated with existing and future town planning. C Public transport to connect towns. P A Increase in ride share options. P A EV charging stations. P A | Flexible planning scheme that allows for innovative housing. C A More housing options i.e. mixture of acreage, medium- and high-density. C P A More state and federal infrastructure spending as population grows. A |

Legend | **C** Council | **P** Partnership | **A** Advocacy

ECONOMY

| New Industry Investment in innovative and sustainable industries. | Tourism Potential Tourism grows around adventure, nature-based and ecology. | Local Skills Diverse employment and training opportunities. | Community Initiative Natural and community-led attractions leveraged and managed for sustainable growth. | Tap Into Tablelands Industries and activities align to regional strengths. | Ag Leader Agriculture underpins our economy and lifestyle. |
|--|--|---|---|--|---|
| Desired outcomes | | | | | |
| Promote and support industry diversification and innovation. C P A Secure and skills-based employment opportunities. P A New enterprises that reflect our natural assets such as plantation timber and biopharmaceuticals. P A Development associated with environmental restoration and enhancing regional assets. C P A | Regional geography leveraged to attract international adventure events. C P A Indigenous and new tourism product development. C P A More nature-based experiences including biking and walking. P A Partnership with Tourism Tropical North Queensland and Events Queensland to enhance ventures. C P | Increased in-region training opportunities. C P A Specially skilled workforce unique to region. C P A Expertise in tropical agriculture and environmental sustainability showcased and expanded. C P A | Quality community-led and looked after regional assets such as Atherton Historic Railway and Atherton Tablelands Rail Trail. C P Community ventures incentivised and supported. C A Natural assets maintained for future generations. C P A Understanding and replication of other popular destinations using regional advantages. C P | Focus on Wet Tropics' unique attributes. C P A Tablelands food bowl expanded and promoted. C P A Shop local, supporting locally sourced produce and goods. C P Development incentives that align with desired growth. C Regional, national and international relationships built. C P A | Value-add agriculture. P A Crop diversification. P A Reduced impacts from external market pressures. P A Leader in ag tech. P A New international, unique crops and bioscience markets. P A Industry leads investment attraction with support from all levels of government. C P A |

Legend



Council



Partnership



Advocacy

IMPLEMENTATION



This Community Plan ensures recognition is given to the needs of future generations in our region who will live, work, study, invest and participate in our community. There are long-term implications for local government decisions and this plan will provide a base and purpose for TRC's Corporate Plan, annual Operational Plans and budgets, strategic land use planning, priority infrastructure planning, and service delivery.

Community organisations, local businesses, government agencies, service providers and residents all contribute to the liveability of the Tablelands Region.

The responsibility for achieving these aspirations and desired future rests with all levels of government and the broader community.

ACCOUNTABILITY

Focus group participants will be encouraged to meet at least annually with key stakeholders to progress priorities and desired outcomes, which will be facilitated by Tablelands Regional Council. Passionate community members will be encouraged to join the journey of realising these aspirations and participate in a refresh of this plan in 2027.

Tablelands Regional Council will include progress on achieving the desired outcomes in this plan through its annual report.



THANKS TO CONTRIBUTORS

The Tablelands 2030+ Community Plan has been developed with input from passionate Tableland locals, representing our geographically and culturally diverse region. We thank you for sharing what is important to you — including why you live here, what we can collectively harness to improve the liveability of this region, what we value most and what opportunities we should focus on now and into an uncertain future.

The process involves shared leadership and action for these aspirations to be realised.

Special thanks to the focus group participants and the working group who provided ongoing oversight in the creation of this long-term plan that will guide the services and activities provided by Tablelands Regional Council, government agencies and community organisations.

Mark Lane
Marni Dennis
Andrew Dennis
Judy Cooper
Rebecca Mason
Tim Forsyth
Gary Aylward
Richard Gobert
Ben Henderson
James Howe
Michelle Mclellan
Jessica Howe
Miya Isherwood
Alexander Larsen
Doreen Mortimore
Sara Isherwood
Diana Kitchen
Ruginia Duffy
Susan Parsons
Billy Alsford
Milly Darby

Nick Trompf
Renee Brigden
Kim McAlavey
Janet Brimson
Louise Livingstone
Louise Anderson-Clemence
Ashley Cupitt
Belinda Moore
David Prete
Maree Baade
Christine Wolf
Jillian Cockrem
Gail Barton
Bree Hargreaves
Helen Fuller
Robin Fuller
Leeandra Norman
Vicki Baylis
Gordon Swan
Matt Lachlan
Michael Lawrence

Marisa Elkington
Mick Carr
Catherine English
Gayle Sticher
Trevor Duncan
Amelia Benefield
Tenielle Lynch
Zamika Seymour
Grace McClarty
Cooper Mickan
Rhylee Wilkinson
Kaeley Scott
Jess Dalgety
Connor LeGear
Joan Vonarx
Diana House
Brydee Cummings
Bob Barkworth
Keith Cox

QUEENSLAND PLAN

The Tablelands community vision and aspirations align with the Queensland Plan foundations of:

- community — making connections
- regions — building thriving communities
- economy — forging diversity and prosperity
- health and wellbeing — being healthy and active
- people — creating opportunities for everyone
- infrastructure — being connected
- governance — balancing all our interests
- and goes a step further regarding environment — achieving balance.



QUEENSLANDERS' VISION FOR OUR STATE (QUEENSLAND PLAN 2014-44)

In 30 years Queensland will be home to vibrant and prosperous communities.

Our state will be well planned with the right infrastructure in the right places, to support a population that has grown across every region.

We will value education as a lifelong pursuit where we gain practical skills, enrich our lives, find secure jobs and improve the competitiveness of our economy.

Our brightest minds will take on the world and we will work collaboratively to achieve the best results for Queensland.

We will be the greatest state in which to live, work and play, and guardian of a sustainable natural environment that inspires an active lifestyle and supports healthy communities.

We will have a community spirit that embraces our diversity and unique culture and gives everyone the opportunity to shine. We will not leave anyone behind.

Government can't do this alone but as a community working together we can achieve everything we want for our state's future.





TABLELANDS 2030+ Community Plan

info@trc.qld.gov.au
1300 362 242 (24/7)
trc.qld.gov.au

