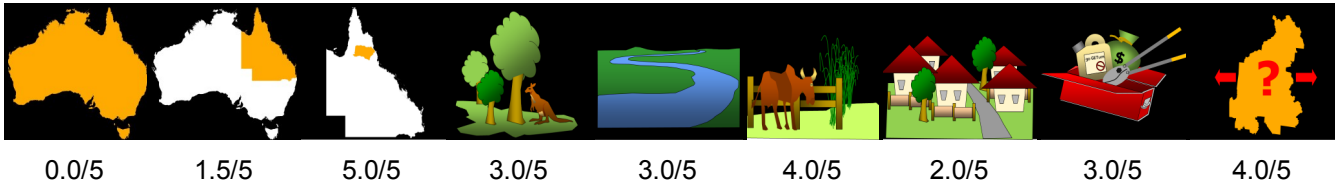


Sicklepod *Senna obtusifolia*

National priority State priority Previous local Conservation Water resources Agriculture and industry Community and residential Feasibility of control Current extent

Priority



Details

Description Sicklepod is a vigorously growing, very competitive woody shrub that grows to 2m tall and up to 1m wide. It has yellow flowers and long, curved seed pods. Normally an annual, though plants that have been slashed or survived chemical application often reshoot and continue to grow another year

Distribution Sicklepod has restricted in distribution.

Impacts Sicklepod can completely dominate pastures. It becomes a major weed of crops within two or three seasons and will invade natural areas, especially following disturbance. Sicklepod often becomes abundant in road corridors and fallowed or vacant land.

Key projects Priority is given to managing roadside infestations to reduce further spread. Best practise management of pastures and spelling infested areas while control takes place is a crucial to success.

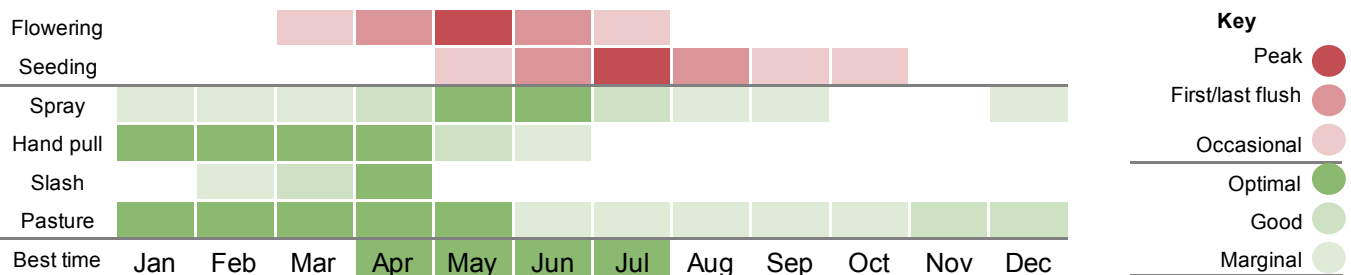
Background

Senna species are weedy in many tropical countries around the world and are thought to be native to America. Although Sicklepod is widespread within the region, there are still localities where it does not occur.

Sicklepod is often spread in contaminated raw materials and produce with flooding and other natural disasters assisting spread to new locations. Machinery, vehicle and stock hygiene practices will help stop the spread to new areas. Spelling stock in holding paddocks for at least seven days will ensure any ingested seed is passed prior to moving to new areas.

Sicklepod should be managed as a weed of pasture and sensitive environmental areas. Mapping infestations will help to identify key assets at risk and manage the impact.

Control calendar



For more information on using this biosecurity action plan fact sheet, and further information on control tools, refer to the Tablelands Biosecurity Plan available at trc.qld.gov.au and customer service centres.

1300 362 242 (24hr Customer Service)

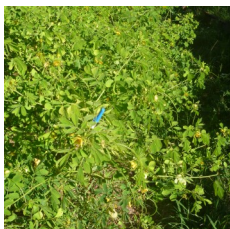
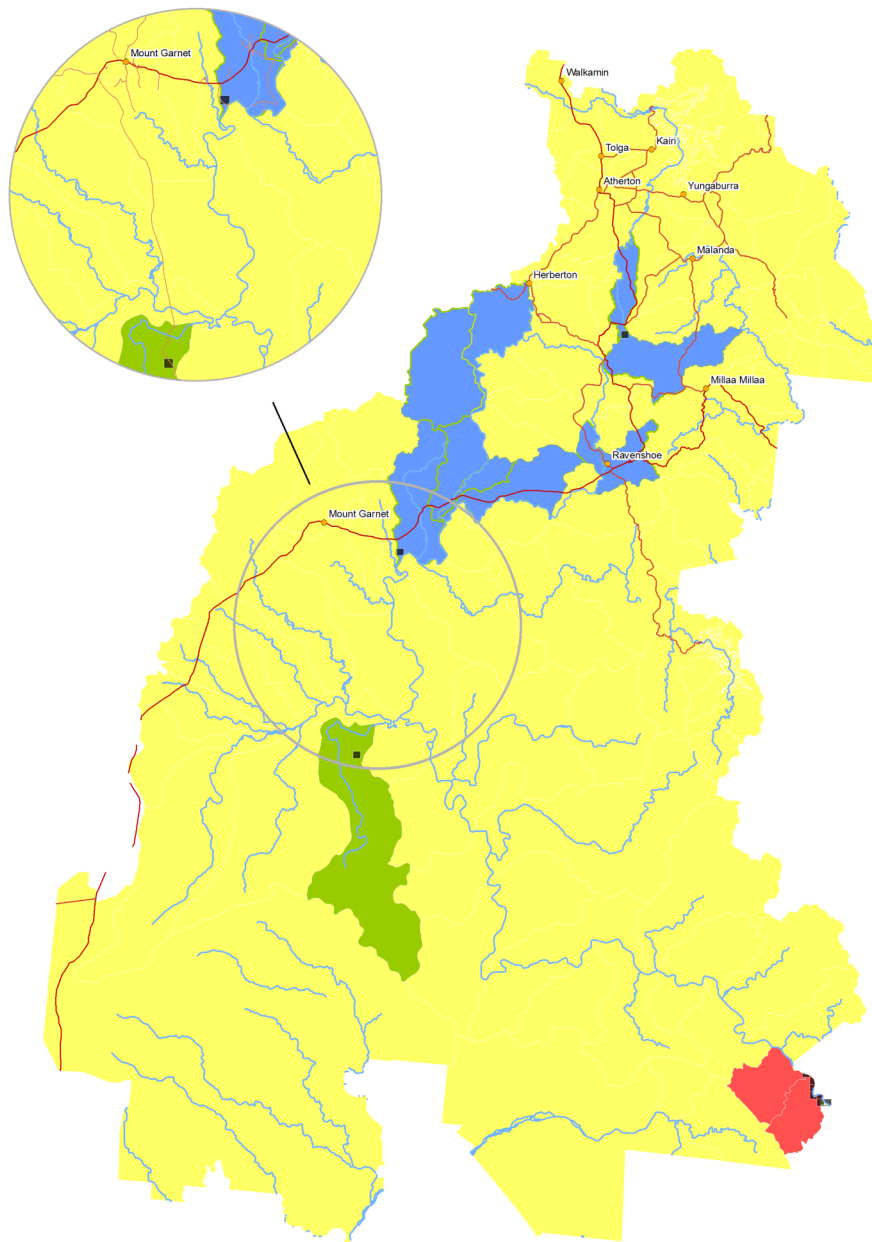
info@trc.qld.gov.au

www.trc.qld.gov.au

PO Box 573, Atherton QLD 4883

Tablelands Regional Council

Customer Service Centres in Atherton, Herberton, Malanda & Ravenshoe



In the prevention zone
In the eradication zone
In the intensive control zone
In the asset protection zone

What is my biosecurity obligation?

In the prevention zone
Sicklepod is a restricted invasive plants. It is an offence under the *Biosecurity Act 2014* to move, share, give away and sell this plant. Ensure machinery and vehicles moving from the infested areas are free from plant material and soil. Source agricultural and raw materials from a weed free area and a reliable supplier. Report any suspected outbreaks/detections to Tablelands Regional Council on 1300 362 242.

In the eradication zone
Control and map strategic infestation along Gunnawarra Road, Mount Garnet. Ongoing control is a high priority as seed can remain viable for up to 10 years. Report any suspected outbreaks/detections to Tablelands Regional Council on 1300 362 242.

In the intensive control zone
Conduct survey and control prior to seed production each year. Do not move soil or plant material from the infestation area.

In the asset protection zone
Ensure best practice weed hygiene measures are in place to reduce risk of spread to new locations. Maintain weed free areas. Identify high value assets and protect them from impacts. Spell stock for at least seven days prior to moving from infested areas.

Woody

Terrestrial

Annual

Biosecurity Act Restricted matter category

2
Must be reported

3
Do not distribute

4
Do not move

5
Do not keep

6
Do not feed

Control



Spread

