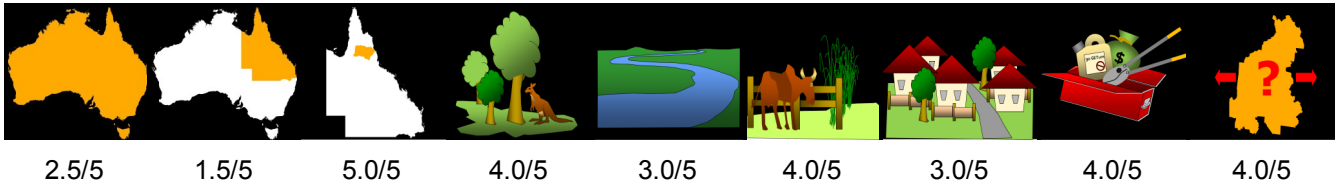


Parthenium *Parthenium hysterophorus*

National priority State priority Previous local Conservation Water resources Agriculture and industry Community and residential Feasibility of control Current extent

Priority



Details

Description Parthenium is an annual herb with a deep tap root and erect stem that becomes woody with age. As it matures, the plant develops many branches in its top half and may eventually reach a height of 2m.

Distribution Localised infestations on the southern Tablelands. Heavier Infestations in neighbouring region in the Upper Herbert and Burdekin Rivers. Introduction is often associated with poultry feed or contaminated machinery from outside the region.

Impacts Parthenium is a weed of crops and grasslands causing loss of crop and pasture production. In susceptible people it can cause severe allergic reactions including hay fever and dermatitis.

Key projects: An ongoing treatment and surveillance program is underway at known roadside infestations.

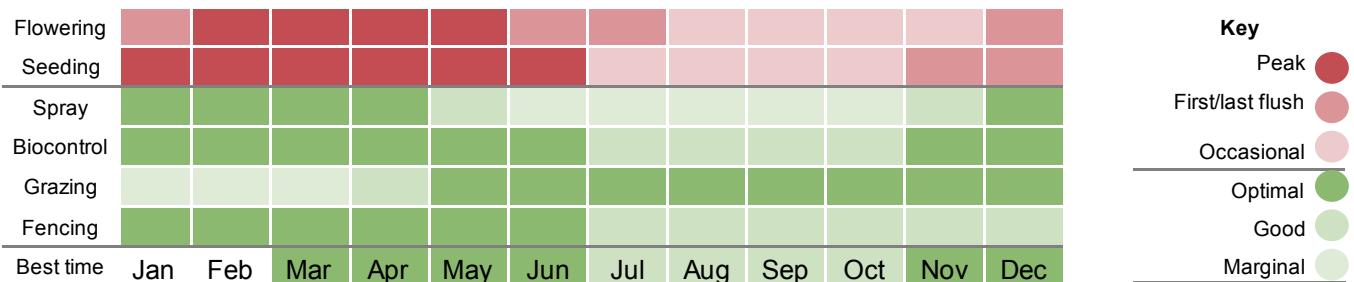
Background

Parthenium is a weed of national significance and a restricted invasive plant under the *Biosecurity Act 2014*. It is common in central Queensland, particularly in the black soil downs districts.

Ensuring imported vehicles and machinery is free from weed seed and soil will assist to reduce the chance of accidental introduction. When purchasing or selling stock or moving animals between properties spelling in a holding paddock for at least seven days will help reduce the risk of spread to new locations.

Parthenium is often spread as a contaminant in stock and poultry feed. Keep a close watch on areas where feed has been spread. Ensure your supplier can confirm the product is free from weed seed and not from a known infested area.

Control calendar



For more information on using this biosecurity action plan fact sheet, and further information on control tools, refer to the [Tablelands Biosecurity Plan](#) available at trc.qld.gov.au and customer service centres.

1300 362 242 (24hr Customer Service)

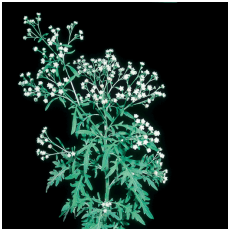
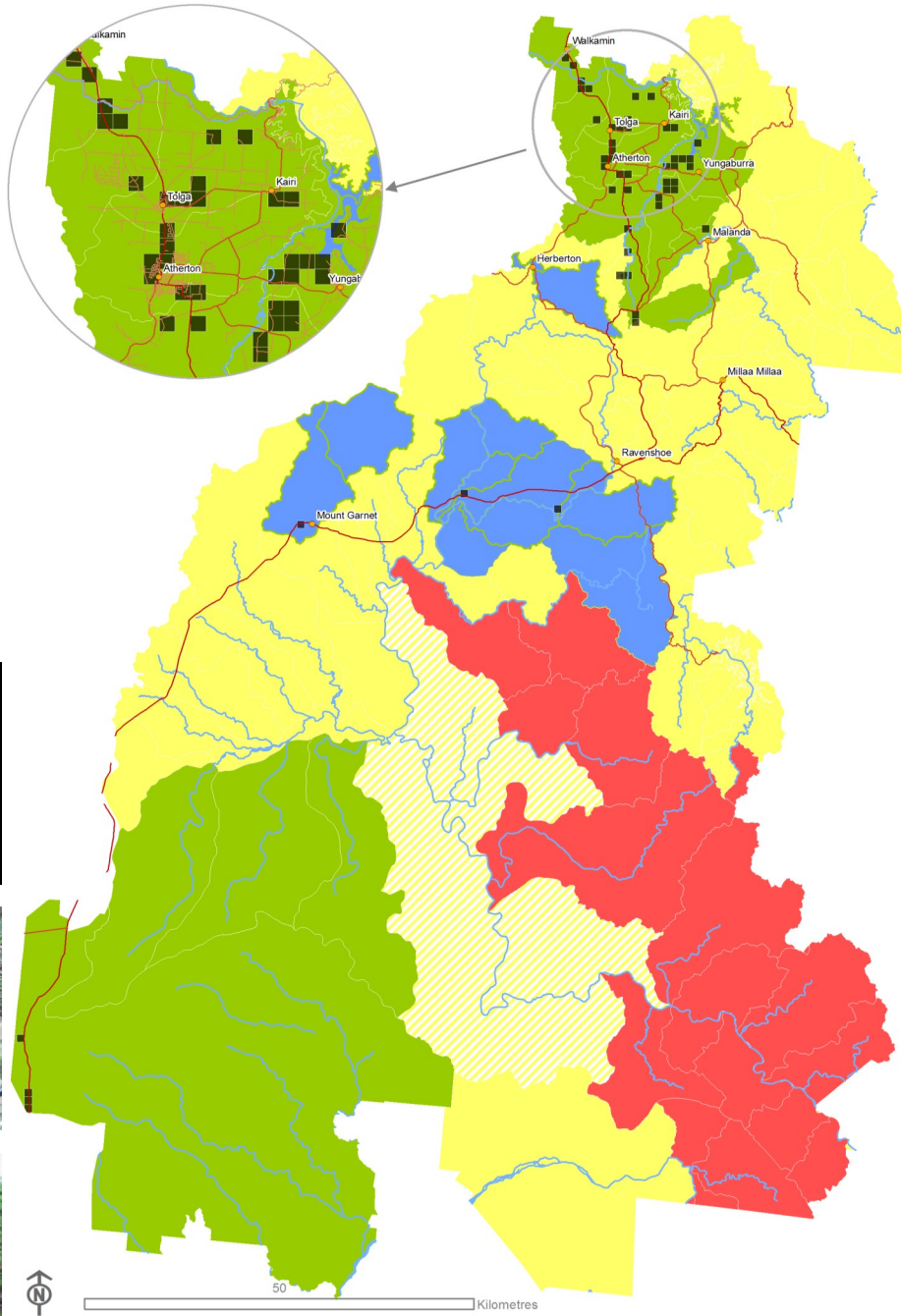
info@trc.qld.gov.au

www.trc.qld.gov.au

PO Box 573, Atherton QLD 4883

Tablelands Regional Council

Customer Service Centres in Atherton, Herberton, Malanda & Ravenshoe



| |
|-------------------------------|
| In the delimitation zone |
| In the prevention zone |
| In the eradication zone |
| In the intensive control zone |
| In the asset protection zone |

What is my biosecurity obligation?

In the delimitation zone
Report any suspected outbreaks or detections to Tablelands Regional Council on 1300 362 242.

In the prevention zone
Parthenium is a restricted invasive plant under the *Biosecurity Act 2014*. It is an offence to move, share, give away and sell this plant. Ensure any machinery, vehicles or stock feed moving from infested areas are free from plant material, seed and soil. Report any suspected outbreaks or detections to Tablelands Regional Council on 1300 362 242.

In the eradication zone
Ensure best practice weed hygiene measures are in place to reduce the risk of spread. Maintain weed free areas. If you have an active infestation on your property you can assist the survey and control team by maintaining property access points and tracks, and not moving soil or plant material from the infestation area.

In the intensive control zone
Report any suspected outbreaks or detections to Tablelands Regional Council on 1300 362 242.

In the asset protection zone
Control outbreaks in areas where they pose a high risk of spread from your property or where important assets are likely to be impacted.

- Herb
- Terrestrial
- Annual

Biosecurity Act Restricted matter category

- 2
Must be reported
- 3
Do not distribute
- 4
Do not move
- 5
Do not keep
- 6
Do not feed

Control



Spread

