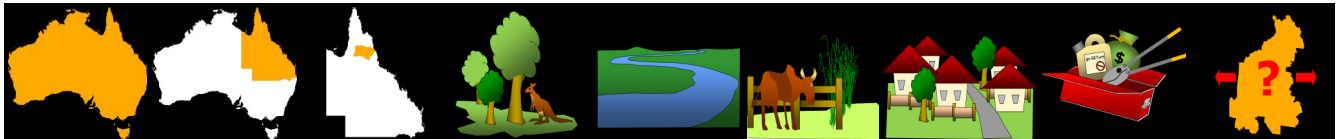


# Navua Sedge *Cyperus aromaticus*

National priority   State priority   Previous local   Conservation   Water resources   Agriculture and industry   Community and residential   Feasibility of control   Current extent



0.0/5   1.5/5   5.0/5   3.0/5   3.0/5   4.0/5   2.0/5   3.0/5   3.0/5

Priority

Details

**Description** A grass-like perennial sedge that grows to 70cm high and has a distinctive, button shaped flower with three large and three small, narrow, glossy green leaves. When stressed the plant turns light yellow. The leaves have a distinctive aroma when crushed.

**Distribution** Navua Sedge is a widespread weed in many areas of the Barron and Johnstone catchments. It occurs as dense infestations or scattered plants in pastures and along roadsides and water courses in the wetter areas of the Tablelands. It is also widespread in the coastal areas of the Wet Tropics.

**Impacts** Navua Sedge is a very effective coloniser as it grows from seed and underground shoots and has high seed production and viability. It outcompetes pasture species, can displace native vegetation, is difficult to selectively control and can significantly decrease productivity.

**Key projects** Tablelands Regional Council has committed significant resources to control and prevent the spread of Navua Sedge on roadsides and provided a landholder assistance program in 2016–17. Malanda Beef Plan Group holds landholder field days and provides information to landholders on identification and

Background

Navua Sedge forms dense stands that can smother many tropical pasture species. It is extremely aggressive, competes strongly for nutrients, light and moisture, and is unpalatable to cattle.

Spread occurs through the normal extension of the rhizome system, by seed and by dispersal of viable rhizome fragments during cultivation. Seed can be dispersed by passing through the digestive system of animals and birds, and also by being transported in mud on hooves, pelts, footwear and machinery.

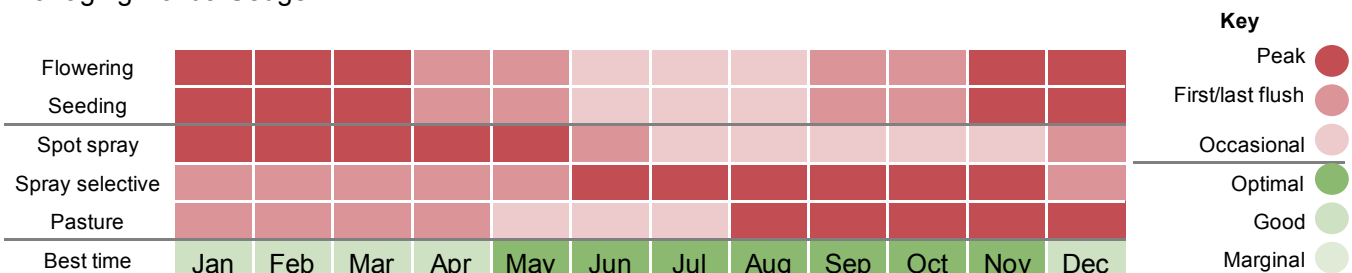
Navua Sedge spreads readily on vehicles and machinery making the management of roadsides and traffic areas important in preventing it spreading to adjoining paddocks and properties. Spelling pastures and careful stock management will also assist reducing the spread

Integrated control in grazing areas including pasture management, herbicide control and weed hygiene activities will assist to keep pasture healthy. Spot spraying isolated outbreaks as they occur and prior to slashing or grazing will assist to prevent development and spread of seed.

A series of Tablelands Regional Council roadside vehicle washdown facilities have been constructed and farm biosecurity signs are available from Tablelands Regional Council. Making use of weed hygiene facilities and establishing hygiene points within or between properties will assist to reduce the risk of spread to clean areas.

There are a range of ongoing research programs investigating herbicide and biocontrol options to assist in managing Navua Sedge.

Control calendar



For more information on using this biosecurity action plan fact sheet, and further information on control tools, refer to the [Tablelands Biosecurity Plan](#) available at [trc.qld.gov.au](http://trc.qld.gov.au) and customer service centres.

1300 362 242 (24hr Customer Service)

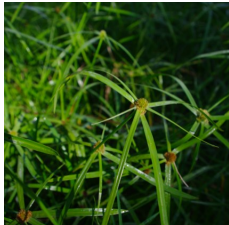
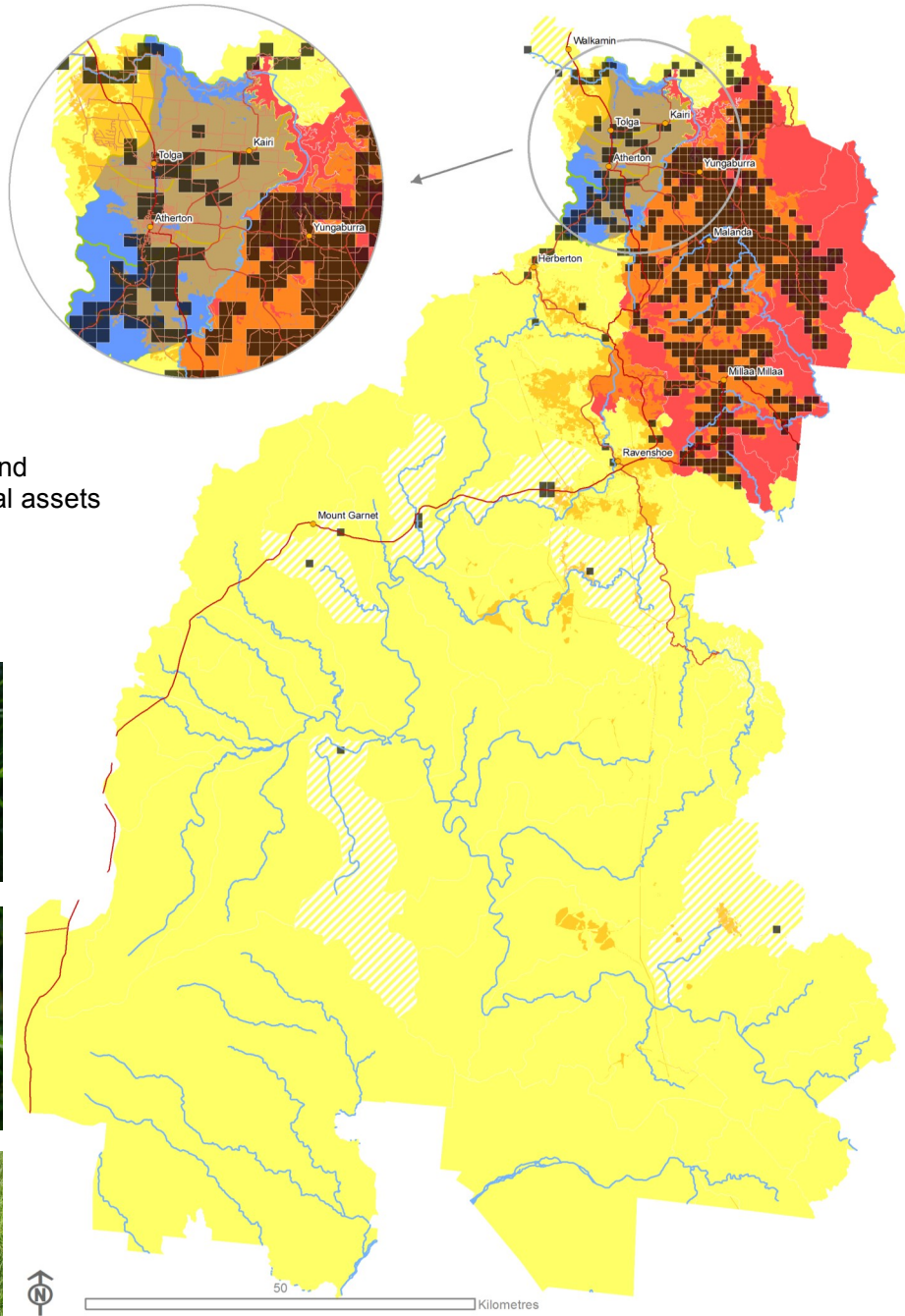
info@trc.qld.gov.au

www.trc.qld.gov.au

PO Box 573, Atherton QLD 4883

Tablelands Regional Council

Customer Service Centres in Atherton, Herberton, Malanda & Ravenshoe



In the delimitation zone	Record locations and report detections in new locations in western districts to Tablelands Regional Council on 1300 362 242.
In the prevention zone	Ensure machinery and vehicles moving from infested areas are free from plant material and soil. Make sure materials and produce are sourced from a weed free area.
In the intensive control zone	Spot spray isolated plants and control isolated infestations. Avoid infested areas. Inspect and clean machinery and vehicles before arriving on or moving from your property.
In the asset protection zone	Prioritise survey and control of Navua Sedge where there are isolated outbreaks and protect high value pasture and production areas. Maintain buffers on access roads and boundaries to reduce the risk of spread. Ensure best practice weed hygiene measures and spell stock in clean holding areas prior to movement or sale.

## What is my biosecurity obligation?

Record locations and report detections in new locations in western districts to Tablelands Regional Council on 1300 362 242.

Ensure machinery and vehicles moving from infested areas are free from plant material and soil. Make sure materials and produce are sourced from a weed free area.

Spot spray isolated plants and control isolated infestations. Avoid infested areas. Inspect and clean machinery and vehicles before arriving on or moving from your property.

Prioritise survey and control of Navua Sedge where there are isolated outbreaks and protect high value pasture and production areas. Maintain buffers on access roads and boundaries to reduce the risk of spread. Ensure best practice weed hygiene measures and spell stock in clean holding areas prior to movement or sale.

Sedge

Terrestrial

Perennial

Local laws apply

Must not breed

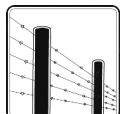
Must not propagate

Must not introduce

Must not sell or supply

Must not provide harbour

Control



Spread

