

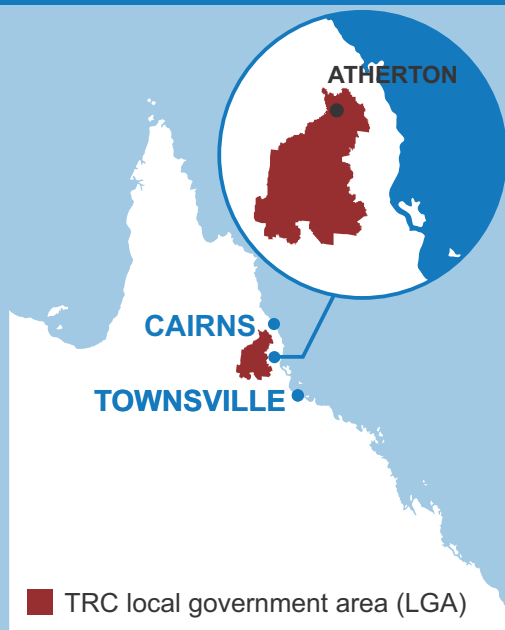


Report Card

Natural Assets & Animal Management



2019/2020

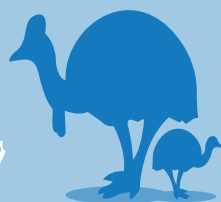


Did you know?

Tablelands Regional Council Geographical Information

Total area & coastline	1,129,300ha	0km of coastline
Wet Tropics World Heritage Area	153,083ha	13.5% of LGA
Protected area	320,852ha	28% of LGA
Nature refuges (53 in total)	64,817ha	5.7% of LGA

Significant/Essential Habitat



Core Cassowary Habitat

141,418ha
12.4% of LGA



Mabi Rainforest

726ha
0.06% of LGA

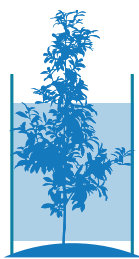


High Elevation (900m+) Climate Refugia

78,000ha
7% of LGA

NATURAL ASSETS

Revegetation



20,739

number of trees produced



203 Volunteer Days

3547 plants sold to individual members of the community

15,705 plants used for revegetation projects

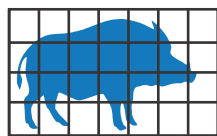
1487 plants used in Council reserves

6.5ha of native trees planted

Pest Animal Management

3

feral pig traps available for loan



2

motion sensing cameras for loan

1136km driven on pest animal control



2

coordinated feral pig control events

2

coordinated wild dog control events

Natural Assets Visitor Infrastructure

20

kilometres of walking tracks

4

public boat ramps maintained

Weed Control

Number of staff hours spent on priority weed control

2133

(25,309km driven)



1500

hectares patrolled for Fireweed control



8905km

travelled to survey and control Navua Sedge

FOURTEEN

biological control releases

Fire Management



40

kilometres of fire breaks maintained or constructed

157ha

subject to environmental burn program

1133km driven for fire management

Priority Plant & Animal Control

As part of the revision of the Fireweed Management Plan, TRC and detector dogs patrolled over 1000ha in the Wongabel, Wondecla and East Evelyn areas to determine the extent of Fireweed. Results have seen an extension to the area of the previously known infestation. This project received grant funding from the Australian Government's Communities Environment Program

Day-to-day operations involve the control of priority plant and pest animals, including coordinated wild dog and feral pig baiting and joint fire management operations with Department of Natural Resources Mines and Energy (DNRME) and Queensland Fire and Emergency Services.

Revegetation

TRC's Community Revegetation Nursery, with the support of 203 volunteer days, supplied 15,705 trees for restoration activities across the region. Ongoing revegetation projects include support to numerous nature refuge holders, a South Cedar Creek land restoration project (Natural Resources Investment Program, DNRME and Terrain NRM) and contribution to carbon economy proposals.

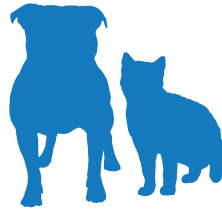
Patrols

252

wandering dogs collected

10

wandering cats collected



Registrations



new dog registrations



3580

total dog registrations in LGA

one

off-leash recreation areas



Incidents



152

the number of dog attacks that TRC responded to

14 REGULATED DOGS

Impoundments & Welfare

122



dogs and cats reunited with their owners

Stock Management



214

customer requests received for wandering stock



41

dogs & cats rehomed



1821

animal management enquiry responses

New Pound Facility

TRC has secured funding to construct a new animal management facility. The existing pound has exceeded its work life and no longer meets legislative requirements. Local Laws Officers will be based at the new facility, which will provide a greater customer experience and service to the community. The facility is expected to be completed by June 2021. This project is an initiative of the Queensland Government.