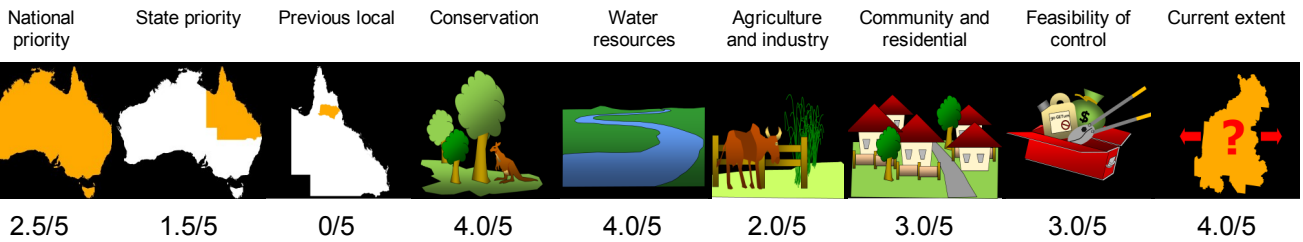


Madeira Vine *Anredera cordifolia*

Priority



Details

Description Madeira Vine has fleshy, waxy, green, heart-shaped leaves about 4–5cm in length. Clusters of warty, light brown, aerial tubers are produced along the length of the stem and underground tubers up to 20cm diameter can grow and at depths of up to 1m. Creamy flower spikes are produced from December to April.

Distribution On the Atherton Tablelands Madeira Vine is found in a variety of locations, usually in association with ornamental gardens .

Impacts Madeira Vine produces large numbers of subterranean and aerial reproductive tubers that persist and make effective management difficult. This is demonstrated by tubers still sprouting after 10 years of intensive spraying.

Key projects Funding for biological control has been unsuccessful. Madeira Vine is managed in areas where it threatens environmental assets

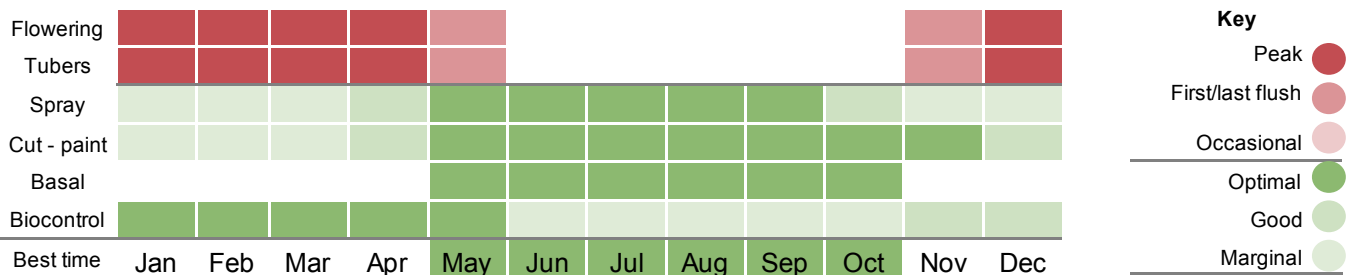
Background

Madeira Vine is a weed of national significance and has been described as a transformer species, which blankets and smothers trees, shrubs and understory species. It can grow up to 1m/week and causes canopy collapse of mature native trees.

Successful management of Madeira Vine requires exhaustion of the tuber bank. Tubers can remain viable for up to 15 years and are easily spread through poor green waste management and gravity and water movement.

Management needs to be carefully considered and include a commitment to regular, long-term follow-up control. The disturbance caused by control work stimulates particularly vigorous vine growth and, if management isn't carried out appropriately, may lead to greater problem

Control calendar



For more information on using this biosecurity action plan fact sheet, and further information on control tools, refer to the [Tablelands Biosecurity Plan](#) available at trc.qld.gov.au and customer service centres.



1300 362 242 (24hr Customer Service)



info@trc.qld.gov.au



www.trc.qld.gov.au

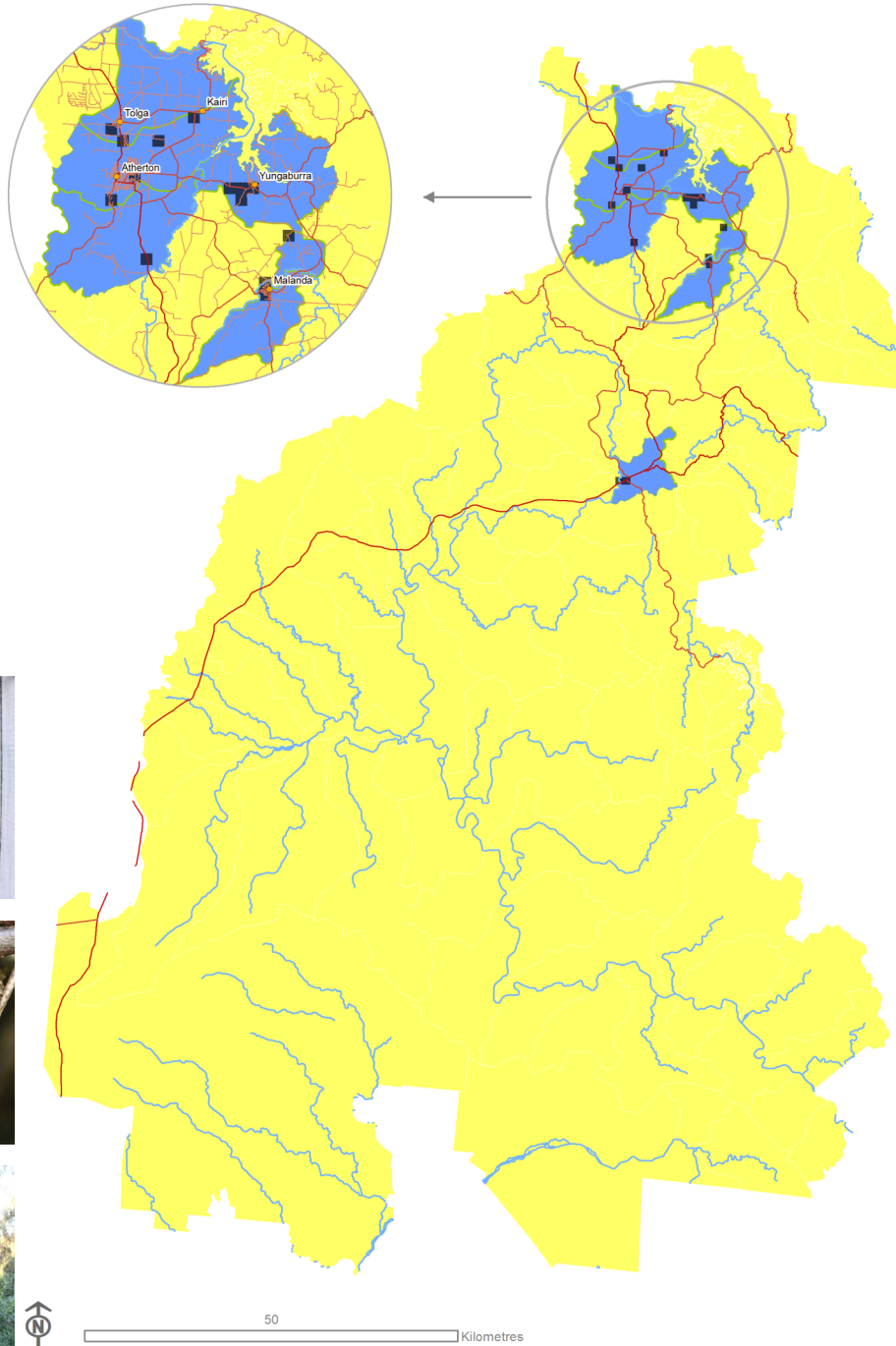


PO Box 573, Atherton QLD 4883



Tablelands Regional Council

Customer Service Centres in Atherton, Herberton, Malanda & Ravenshoe



Vine

Terrestrial

Perennial

Biosecurity Act Restricted matter category

2 Must be reported

3 Do not distribute

4 Do not move

5 Do not keep

6 Do not feed

Control



Spread



What is my biosecurity obligation?

In the delimitation zone

Report locations and new detections to Tablelands Regional Council on 1300 362 242.

In the prevention zone

Madeira Vine is a restricted invasive plant. It is an offence under the *Biosecurity Act 2014* to move, share, give away and sell this plant. If you have an active infestation on your property you can assist the survey and control team by maintaining property access and tracks, and not moving soil or plant material from the infestation area. Ensure machinery and vehicles moving from the infested areas are free from plant material and soil. Source agricultural and raw materials from a reliable supplier and a weed free area.

In the intensive control zone

Work strategically, protecting the better quality native vegetation first. Control isolated plants and sparse populations, and prioritise isolated infestations on high ground or at the top of catchments.