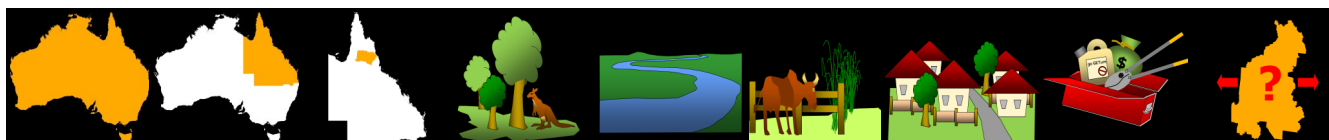


Giant Sensitive Plant *Mimosa invisa*

National priority State priority Previous local Conservation Water resources Agriculture and industry Community and residential Feasibility of control Current extent



0.0/5 1.5/5 3.0/5 3.0/5 3.0/5 3.0/5 2.0/5 3.0/5 5.0/5

Priority

Details

Description Giant Sensitive Plant is a shrubby or sprawling annual but behaves as a perennial vine in certain years. Bright green leaves grow off the stem at four angles, usually with a line of sharp, hooked prickles and fern-like leaves that close up at night and when disturbed. Flowers are small, pale pink fluffy balls about 1.2cm across. Numerous pods are clustered, each about 2.5cm long and 6mm wide when ripe. Clothed with small prickles, these later break into four or five one-seeded pieces.

Distribution This plant is known from one location on the Palmerston Highway but is common in high rainfall areas of coastal North Queensland from Ingham to Cooktown.

Impacts Giant Sensitive Plant chokes grasslands, cane and other crops causing loss of crop and pasture production.

Key projects Although plants have not been found recently in the Tablelands Regional Council area, regular and ongoing monitoring is paramount to success. Biological control has had limited affect.

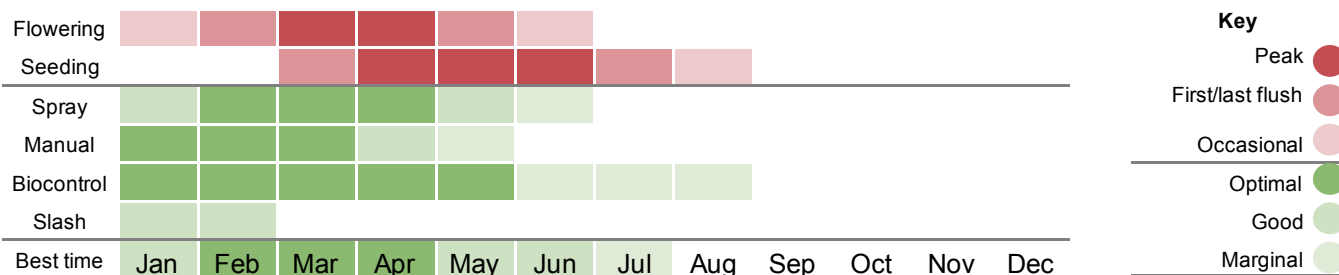
Background

Giant Sensitive Plant is native to Brazil. It was found in a borrow pit in the Little Beatrice area on the Palmerston Highway in 2008 and has naturalised in the high rainfall areas of coastal North Queensland, from Ingham to Cooktown, and around Mackay. Sand pits in the Cassowary Coast Regional Council area have been quarantined and records of all sand/gravel movement from these areas must be kept by carriers.

Giant Sensitive Plant usually flowers and seeds from April through to the end of June, but in years when there has been minimal cold weather, plants will seed from April through to December. Seeds are viable for up to 50 years. Seeds are transported by running water, vehicles, machinery, stock and contaminated earth. Tablelands Regional Council continues to be vigilant and monitor for other outbreaks, particularly at borrow pits and spoil dump sites.

Common Sensitive Plant (*Mimosa pudica*) is similar to Giant Sensitive Plant except for its low sprawling form and growth size between 15-45cm high.

Control calendar



For more information on using this biosecurity action plan fact sheet, and further information on control tools, refer to the [Tablelands Biosecurity Plan](#) available at trc.qld.gov.au and customer service centres.



1300 362 242 (24hr Customer Service)



info@trc.qld.gov.au



www.trc.qld.gov.au

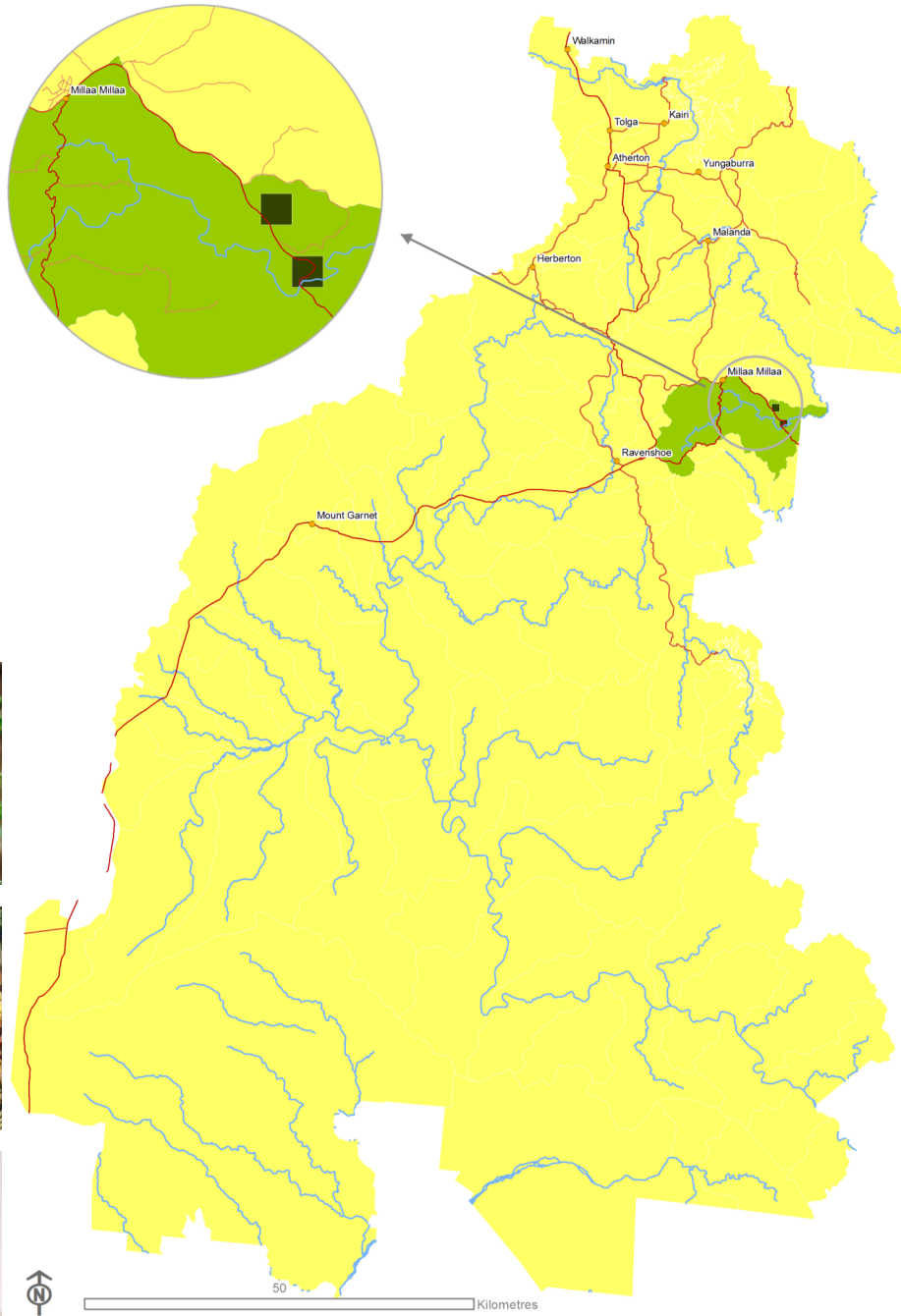


PO Box 573, Atherton QLD 4883



Tablelands Regional Council

Customer Service Centres in Atherton, Herberton, Malanda & Ravenshoe



What is my biosecurity obligation?

In the prevention zone

In the eradication zone

Giant Sensitive Plant is a restricted invasive plant. It is an offence under the *Biosecurity Act 2014* to move, share, give away and sell this plant. If you have an active infestation on your property you can assist the survey and control team by maintaining property access and tracks, and not moving soil or plant material from the infestation area. Ensure any machinery and vehicles moving from the infested areas are free from plant material and soil. Source agricultural and raw materials from a reliable supplier and weed free area.

As seeds are viable for up to 50 years, monthly monitoring of known infestations is crucial.

Woody

Terrestrial

Annual

Biosecurity Act Restricted matter category

2
Must be reported

3
Do not distribute

4
Do not move

5
Do not keep

6
Do not feed

Control



Spread

