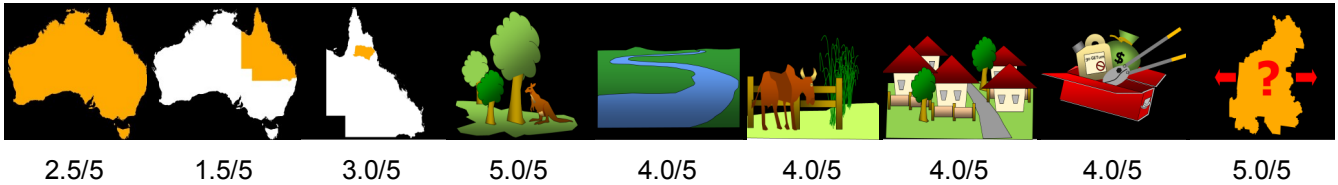


# Gamba Grass *Andropogon gayanus*

National priority   State priority   Previous local   Conservation   Water resources   Agriculture and industry   Community and residential   Feasibility of control   Current extent

Priority



Details

**Description** A robust, upright perennial grass that grows to 4m with distinctive plumed seed heads. Gamba Grass forms thick and strong tussocks that remain upright even when fully cured in the dry season.

**Distribution** Gamba Grass is currently restricted to isolated infestations at Rocky Creek, Walkamin, Innot Hot Springs and Kirrama regions. A major infestation exists to the north in the Hann Tableland, Mareeba Shire. More surveys are required to determine the distribution of Gamba Grass in the western and southern parts of the Tablelands.

**Impacts** Gamba Grass was planted as tropical pasture but has escaped from intensively managed grazing systems. It outcompetes native pastures and fuels intense fires. Late season Gamba Grass fires are very difficult to manage and pose a significant threat to life and property.

**Key projects** An active Gamba Grass management plan is in place across Far North Queensland and Cape York Peninsula. An industry code of practice for containment of retained plantings has been drafted and can assist graziers manage risk of spread from planted sources. An active roadside monitoring and control

Background

Up until its declaration as an invasive weed, Gamba Grass was highly promoted as a tropical pasture grass. Wider delimitation in the western rangelands of the region are required to establish if there has been any spread from historically-planted sources.

Containment of planted sources and maintenance of buffers on access roads can reduce the spread and impact of Gamba Grass. Ensuring adequate stocking rates at the right times of year can prevent seeding and rank growth in retained plantings.

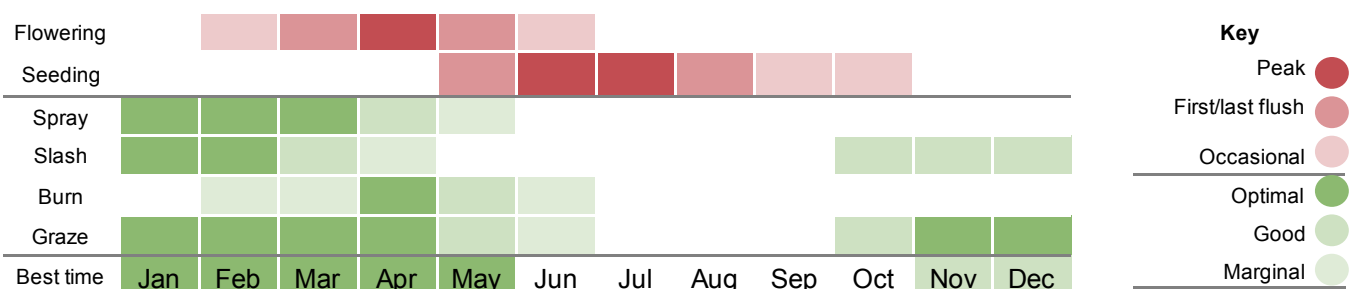
Gamba Grass is Weed of National Significance and a restricted invasive plant under the *Biosecurity Act 2014*. It is an offence to move, share, give away or sell this plant.

Do not sell cart, introduce or transport contaminated hay or silage.

Ensuring vehicles, machinery and raw materials including hay are from a clean source will assist to reduce the risk of accidental introduction and spread of Gamba Grass.

A management plan for Gamba Grass is available at [trc.qld.gov.au](http://trc.qld.gov.au).

Control calendar



For more information on using this biosecurity action plan fact sheet, and further information on control tools, refer to the *Tablelands Biosecurity Plan* available at [trc.qld.gov.au](http://trc.qld.gov.au) and customer service centres.

1300 362 242 (24hr Customer Service)

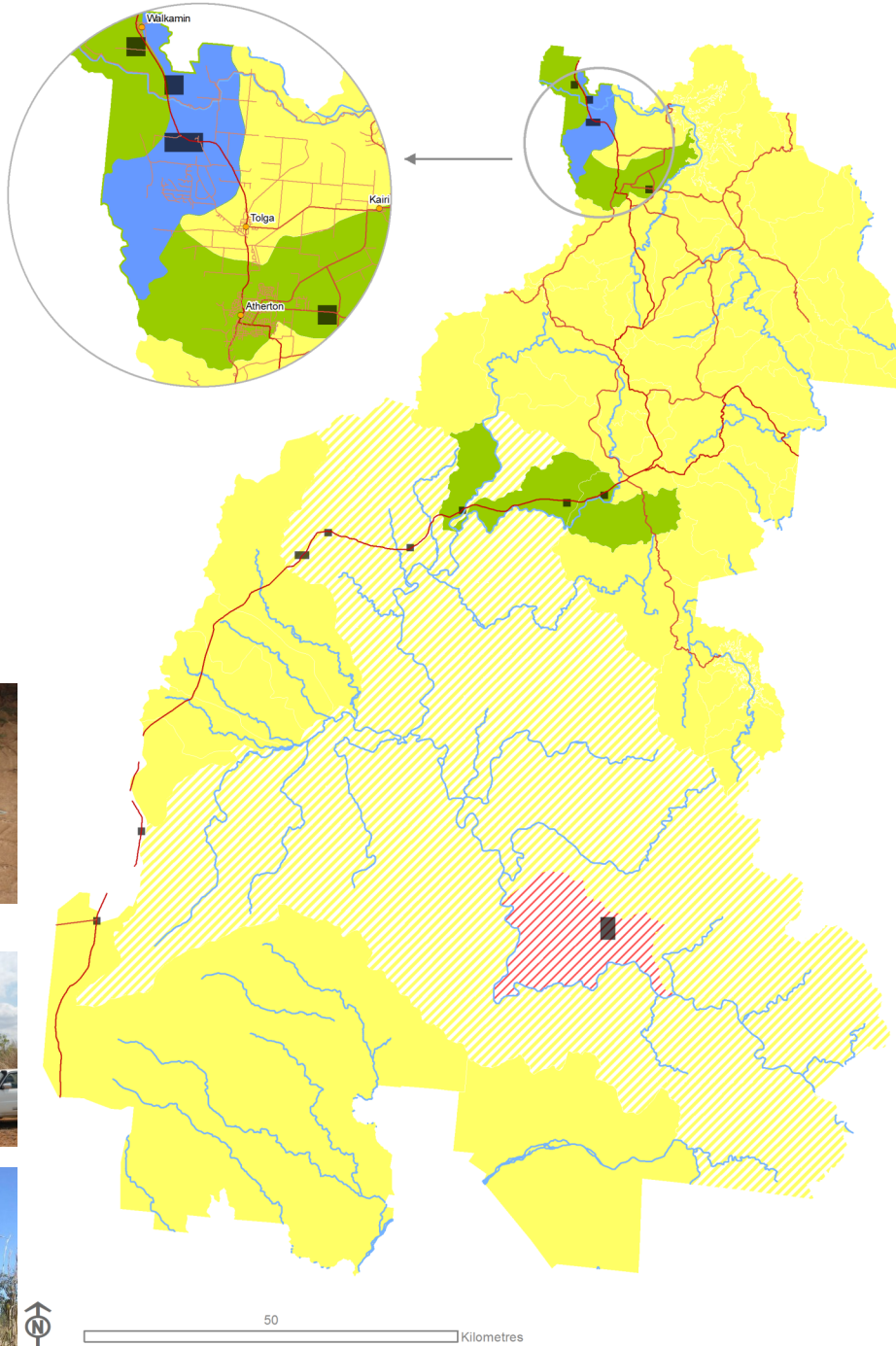
info@trc.qld.gov.au

www.trc.qld.gov.au

PO Box 573, Atherton QLD 4883

Tablelands Regional Council

Customer Service Centres in Atherton, Herberton, Malanda & Ravenshoe



- Grass
- Terrestrial
- Perennial

Biosecurity Act Restricted matter category

2 Must be reported

3 Do not distribute

4 Do not move

5 Do not keep

6 Do not feed

Control



Spread



### What is my biosecurity obligation?

- In the delimitation zone
- In the prevention zone
- In the eradication zone
- In the intensive control zone
- In the containment zone

Report any suspected outbreaks or detections to Tablelands Regional Council on 1300 362 242.

Ensure machinery and vehicles moving from the infested areas are free from plant material and soil. Do not sell, cart, introduce or transport contaminated hay or silage.

Ensure best practice weed hygiene measures are implemented to reduce risk of spread elsewhere. Assist in annual survey operations and control isolated plants before they seed. Do not sell, cart, introduce or transport contaminated hay or silage.

Ensure best practice weed hygiene measures are implemented to reduce risk of spread to new locations. Maintain weed free areas.

Contain planted sources and maintain buffers on access roads to reduce the spread and impact. Ensuring adequate stocking rates at the right times of year can prevent seeding and rank growth in retained plantings. Develop a containment strategy with local landholders.