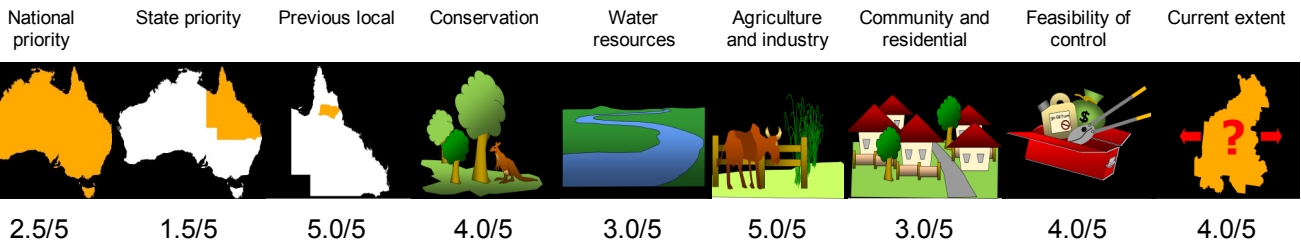


# Fireweed *Senecio madagascariensis*

## Priority



## Details

**Description** A daisy-like annual herb up to 50cm tall with bright yellow flowers and sparse, often downturned petals. Leaves are dark green with serrated margins. An annual or short-lived perennial.

**Distribution** Tablelands Regional Council currently has the only known Fireweed infestation north of Gympie, Queensland. It is found on properties in Wondecla and Wongabel and along the Kennedy Highway around Gentle Annie, Millaa Millaa.

**Impacts** Fireweed competes with pasture species and is poisonous to stock. It can cause illness, slow growth and sometimes death. It has the potential to contaminate honey and pollen products.

**Key projects** Survey and control operations occur at all sites on a regular basis. Tablelands Regional Council Land Protection Officers work with landholders at known infestations to control and prevent the spread of Fireweed.

## Background

Fireweed is a restricted species under the *Biosecurity Act 2014*. It competes with pasture and causes illness, slow growth, poor condition and sometimes death in stock.

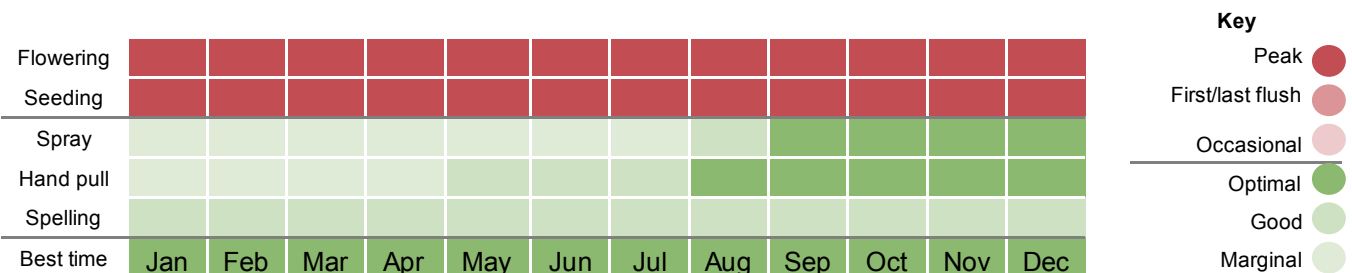
Infestations of Fireweed can produce one million seeds per hectare. Seeds are light and easily carried long distances by the wind, and shorter distances by stock. Of real concern is the spread of seeds in pasture seed, hay, turf, mulch and hydro-mulch.

Since it was first detected in 2008, Fireweed has been found in three locations on the Tablelands, the next closest incidence being at Gympie, 1500km to the south.

Landholders with Fireweed on their property should work with Tablelands Regional Council to develop and adhere to a biosecurity plan.

Do not slash as fireweed remains toxic after being cut and more attractive to stock. Chip out, bag and burn isolated plants but do not leave chipped-out plants in paddocks as they may still set seed and poison stock.

## Control calendar



For more information on using this biosecurity action plan fact sheet, and further information on control tools, refer to the [Tablelands Biosecurity Plan](http://trc.qld.gov.au) available at [trc.qld.gov.au](http://trc.qld.gov.au) and customer service centres.

1300 362 242 (24hr Customer Service)

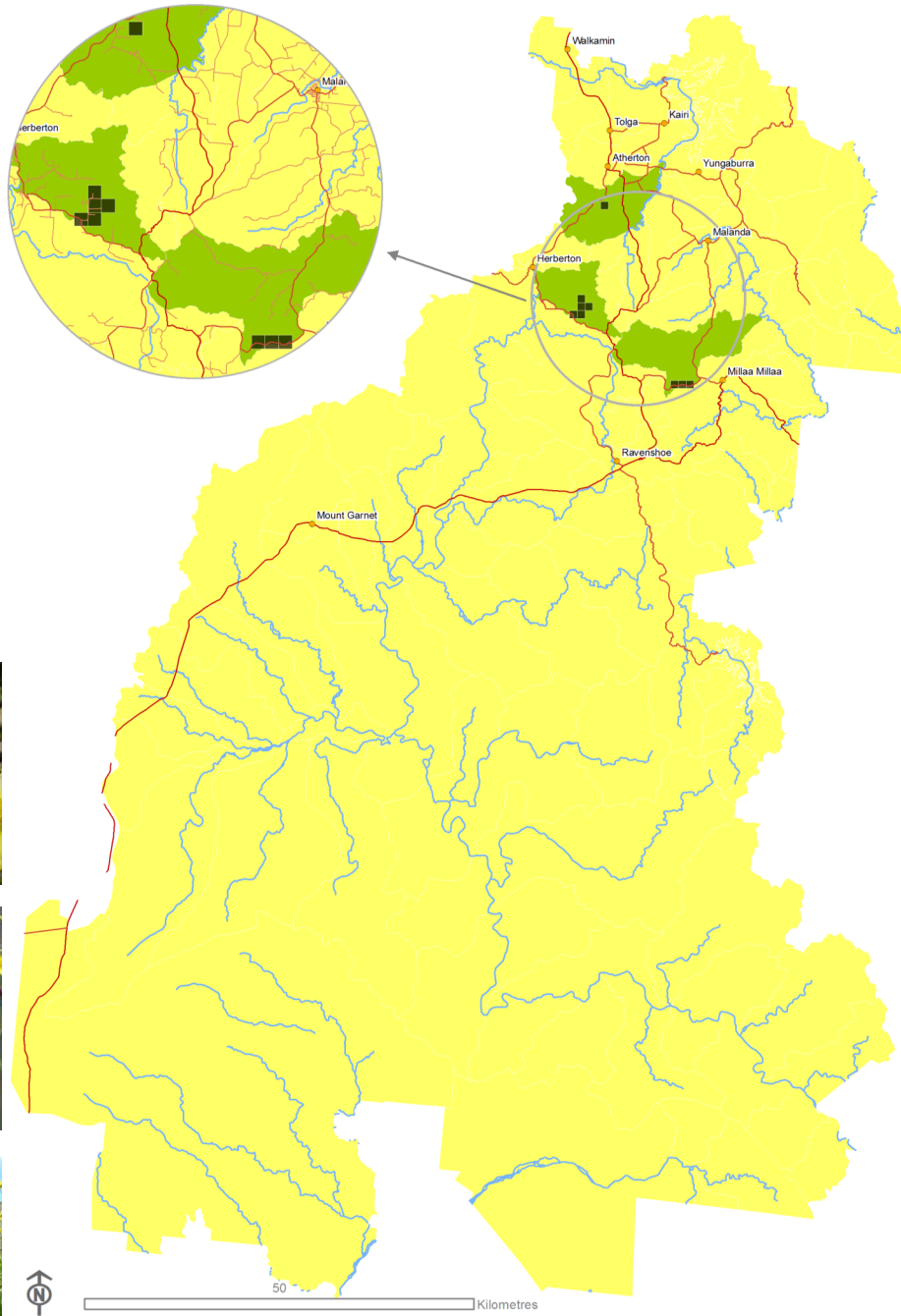
[info@trc.qld.gov.au](mailto:info@trc.qld.gov.au)

[www.trc.qld.gov.au](http://www.trc.qld.gov.au)

PO Box 573, Atherton QLD 4883

Tablelands Regional Council

Customer Service Centres in Atherton, Herberton, Malanda & Ravenshoe



Herb

Terrestrial

Annual

Biosecurity Act Restricted matter category

**2**  
Must be reported

**3**  
Do not distribute

**4**  
Do not move

**5**  
Do not keep

**6**  
Do not feed

Control



## What is my biosecurity obligation?

**In the prevention zone**

Ensure there is a dense cover of pasture in autumn and winter to decrease the rate of Fireweed germination. Report any suspected outbreaks or detections to Tablelands Regional Council on 1300 362 242.

**In the eradication zone**

Fireweed is a restricted invasive plant. It is an offence under the *Biosecurity Act 2014* to move, share, give away and sell this plant.

If small infestations are found, act immediately to increase the chance of eradication.

Properties with active infestations can assist the survey and control team by maintaining property access points and tracks, and not moving soil or plant material from the infestation area. You should also work with Tablelands Regional Council to develop and adhere to a biosecurity plan for your property. Report any suspected outbreaks or detections to Tablelands Regional Council on 1300 362 242.

Spread

